



Croydon  
College

# WIDE RANGING, LIFE CHANGING

Courses, Careers, Opportunities

**COURSE GUIDE** 2024-2025

# WIDE RANGING, LIFE CHANGING



## **We are delighted to share our new course guide for 2024/25.**

Croydon College is one of the largest Colleges of Further Education in South London, and offers a range of academic routes for students. This guide includes everything you need ahead of your journey with us, including information about our campus, exceptional industry-standard facilities, the courses available to you and enrichment opportunities on offer.



Our dedicated team of industry experts, curriculum and support staff will be with you every step of the way toward your chosen destination, whether that be progression to university, higher apprenticeships or into employment.

**We look forward to welcoming you soon.**  
**Caireen Mitchell, Principal & CEO Croydon College**

## CONTENTS

Welcome	2
Why Choose Croydon College?	3
Industry Standard Facilities	4
Supporting Your Success	6
Do More, Be More	8
Careers and Employability	10
Course Levels	14
Study Programme	15
Access to Higher Education	16
Funding our Studies	17
Online Learning	96
World of Work	97
Coulsdon College	98
Croydon Uni Centre	99
Financial Support	100
Find Us	101
Open Days 2023/24	102

## COURSES

Apprenticeships	12
Art, Design and Fashion	18
Business	22
Childcare	26
Construction	30
Engineering and Electrical	34
ESOL	38
Hair and Beauty	40
Health and Social Care	44
Hospitality and Catering	48
Information Technology (IT)	50
Media, Esports and Animation	52
Motor Vehicle	56
Performing Arts and Music	60
Public Services	64
Science	68
Sports	72
Supported Education	76
Travel and Tourism	78
T Levels	80
Access Courses	84
English and Maths	92

# WHY CHOOSE CROYDON COLLEGE?

**As one of the largest Colleges of Further Education in South London – Croydon College offers so much more:**

**Outstanding industry-standard facilities**

**Exceptional creative arts studios and workshops**

**Innovative curriculum**

**Industry trained teachers**

**Incredible personal support**

**Focused tutorials to help you go further**

**Student enrichment – from sports to LGBTQ+ societies to entrepreneurship**

**Wide-ranging links with employers**

**Work experience and work placements**

**Courses at all levels from entry to degree**

# FANTASTIC FACILITIES

A red car with its hood open, showing the engine compartment. The car is parked in a well-lit workshop or garage. The background shows various tools and equipment.

We have invested more than £60 million to ensure the college provides top-quality teaching spaces and industry-standard facilities.

## MOTOR VEHICLE MECHANICS

We also ensure we provide the latest software and equipment alongside fully equipped workshops for our vocational courses in Construction and Building Services and Motor Vehicle Mechanics.

## CONSTRUCTION

A construction worker wearing a yellow high-visibility vest and safety glasses is kneeling and laying bricks on a wall. The worker is using a trowel to apply mortar. The background shows a construction site with various materials and equipment.



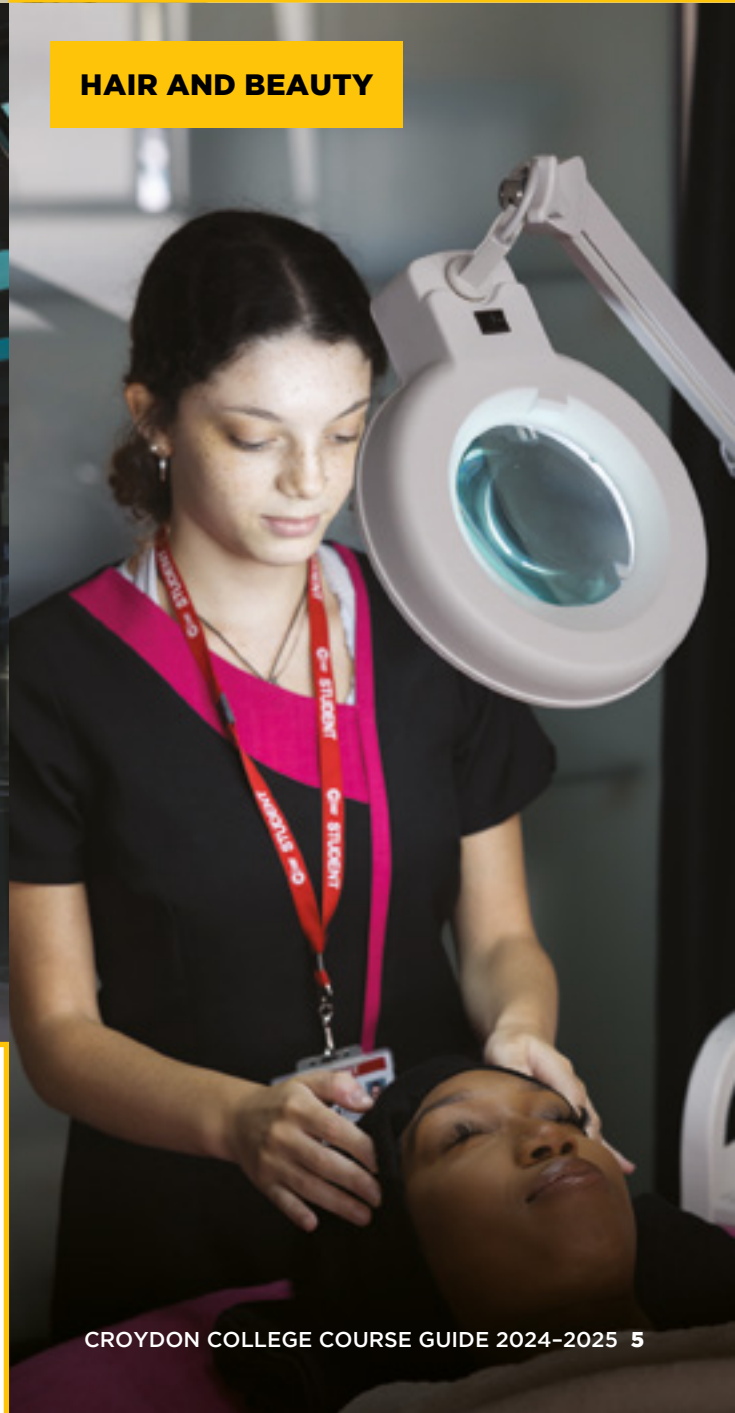
**FASHION STUDIO**

**Our Hair and Beauty courses benefit from a professional salon environment and our Art, Design & Fashion courses offer photographic dark rooms, print and film studios and purpose-built fashion and textile studios.**



**LIBRARY**

**Outside of the classrooms, our Learning Resource Centre - spread over 3 floors - gives students access to our extensive library facility with free Wi-Fi and plenty of space to complete assignments.**



**HAIR AND BEAUTY**

# SUPPORTING YOUR SUCCESS

**Our Student Support teams are here to help make sure your time at Croydon College is all you want it to be.**

Our friendly Student Services team is your one-stop shop for help and advice to ensure you enjoy your time at college and achieve your potential. We're here to offer financial support and advice, careers guidance, support with personal or social issues, enrichment activities and much more!

## LEARNING SUPPORT

The College is committed to providing a supportive and friendly learning environment for all students. We have a confidential student learning support service that can help students with a disability and/or learning difficulty.

We welcome students with learning difficulties, disabilities and medical conditions. The Additional Learning Support (ALS) team will support you to maximise your potential and achieve your learning goals.

## SAFEGUARDING AND WELLBEING

We know that sometimes you might need or want some extra support. Our Safeguarding and Wellbeing team are here to support you.

The team provides a safe place to talk and offer a one-to-one, confidential service to all students. The Safeguarding team also offer a range of advice from digital safety, radicalisation, to homelessness, mental health and personal safety.

### WE OFFER:

- 1:1 or small group support
- Drop-in support for English, maths and vocational subjects
- Assessments for Exam Access Arrangements
- Reasonable adjustments to facilities and resources
- Access to quiet study spaces and assistive technology and equipment
- Information, advice and guidance for career progression





## CAREERS AND EMPLOYABILITY

Making the right career decision is important and at Croydon College, our Employability and Careers team will assist you in choosing the right course and help you plan your next step, be it entry into higher education or employment.

## FINANCIAL SUPPORT

There is plenty of expert guidance and financial support available to remove any barriers to learning. For those from low household-income families, the College offers some financial support for costs associated with your course. More information is available on page 100.

**FOR MORE INFORMATION CONTACT  
[ADMISSIONS@CROYDON.AC.UK](mailto:ADMISSIONS@CROYDON.AC.UK)**

# DO MORE BE MORE

There is a hub of activity outside the classroom, and alongside your courses, there are many opportunities for you to meet other people, learn new skills, and have fun!



## CLUBS **AND SOCIETIES**

The Student Experience team regularly organises a host of activities. There's always something to join in with, and they're all free!

### **THESE INCLUDE:**

Table tennis

---

Football

---

Yoga

---

Debating club

---

Songwriting

---

Quiz and bingo sessions

---

**Throughout the year we celebrate a range of awareness events and themes, giving you the opportunity to learn about and engage with social issues and causes.**



**Scan to view our  
Enrichment Guide!**



# SOCIAL SPACES

The campus has great indoor and outdoor communal areas to help you unwind and grab a bite to eat between lessons. Hot and cold food is available, as well as spaces to bring your own food and relax with your friends. The Common Room is also a great space to hang out, play games, join in with activities, or just relax and have some fun.

## MAKE YOUR VOICE HEARD

Our very active Student Union leads our student voice on a number of issues close to the heart of young people at the College. Whether you're keen to get close to the action as an elected student leader or simply happy to enjoy the opportunities the Student Union will bring your way, you will find the activities will enrich your time at Croydon College.

**DO MORE,  
BE MORE!**



# CAREERS AND EMPLOYABILITY

**Whether you're looking at university, an apprenticeship, or getting into the workplace, we are committed to helping you achieve your potential. Our careers team is always on hand to offer impartial and confidential advice and guidance on courses, careers and training.**

As a student at Croydon College, you will have opportunities to develop skills through taking part in some of our enrichment activities such as the Duke of Edinburgh and National Citizenship schemes, which will help your CV or university application stand out.

Throughout the year we run talks and workshops to help you complete your UCAS application, prepare your personal statement, and be interview ready if you need it.

**Our great partnership links with universities mean there are opportunities for you to meet with universities and get feedback on your personal statement before you apply.**





**T-LEVELS**

# T LEVELS

**T Levels are two-year qualifications for 16–19-year-olds. They are equivalent to A Levels and Level 3 qualifications, combining classroom theory, practical learning and substantial industry placements to make sure students have real experience of the workplace.**

**We're excited to offer:**

Digital Production Design  
and Development

---

Education and Childcare

---

Mechanical Engineering

---

T Levels offer students a mixture of classroom learning and 'on-the-job' experience during an industry placement of at least 315 hours (approximately 45 days).

**FIND OUT MORE**  
**[CROYDON.AC.UK/T-LEVELS](https://CROYDON.AC.UK/T-LEVELS)**

**FOR COURSE INFORMATION  
SEE PAGE 80**

# APPRENTICESHIPS

**If you want to earn as you learn, an apprenticeship might just be the thing for you. We offer a range of Apprenticeships at Croydon College.**

Croydon College is one of South London's leading providers of apprenticeships. Study for a nationally recognised qualification, while receiving on-the-job training and getting paid at the same time. We have a huge selection on offer at various levels.

We can start an apprenticeship at any level depending on your existing qualifications and experience.

There are no tuition fees as training costs are funded by the government and your employer.

**FIND OUT MORE**  
**[CROYDON.AC.UK/APPRENTICESHIPS](https://CROYDON.AC.UK/APPRENTICESHIPS)**



 Apprenticeships



## **WE OFFER APPRENTICESHIPS IN**

Business & Accounting

---

Construction & Trades

---

Customer Service

---

Digital Marketing

---

Education

---

Information Technology (IT)

---

Management & Leadership

---



**VIEW LIVE VACANCIES**



# COURSE LEVELS

## ENTRY LEVEL

This level is ideal for those who don't have any formal qualifications and need to focus on foundation skills.

## LEVEL 1

This level is for those with one or two GCSEs who need to focus on foundation skills and learning some of the basics. Most will progress to Level 2 to get qualified for their career.

## LEVEL 2

This is the most commonly studied level and will provide you with the qualifications for employment. You can progress to Level 3 or an apprenticeship.

## LEVEL 3

This level is equivalent to A Levels and is more advanced. On completion you can go onto university, higher apprenticeships or into employment.

## LEVELS 4, 5 AND 6

These are degree level and are offered at Croydon University Centre on the same campus as the College.



# STUDY PROGRAMME

**If you are between 16 and 18 years old, you will join a Study Programme at Croydon College. The programme will combine classroom study, English and maths, personal study, work experience and other activities to enrich your learning.**

Croydon College offers a wealth of courses at all levels to suit everyone. All students need good English and maths skills to be successful in studying, and for future employment, so Croydon College ensures these skills are developed in all learning opportunities.

We offer a huge range of vocational qualifications to choose from, in a range of levels. These are industry-focused qualifications that combine practical and theoretical studies and are recognised by universities and employers alike as suitable entry qualifications for university courses, apprenticeships and graduate training programmes.

# ACCESS TO HIGHER EDUCATION

**Getting an advanced level qualification provides increased choice and opportunity, increased career opportunities, higher earnings and more confidence!**

These one-year courses are designed for adults (aged 19 and above) who may have been out of full-time education for some time or those who want to apply to university but don't have the required qualifications. Some may be considering a career change.

## WE OFFER A NUMBER OF DIFFERENT PATHWAYS:

### LEVEL 3

Criminology and Law

---

Counselling Skills (NCFE)

---

Mental Health Nursing

---

Midwifery

---

Nursing

---

Nursing for Health Care Workers

---

Nursing and Health Sciences

---

Science

---

Social Work

---

Working in the Community

---

### LEVEL 2

Counselling (NCFE)

---

Law

---

Nursing

---

Psychology

---

Applied Science

---

### ENTRY LEVEL 3 TO LEVEL 1

IT Digital Skills

---

**SEE COURSE DETAILS  
ON PAGE 84**



# FUNDING YOUR STUDIES

For some Access to Higher Education courses, you can apply for an Advanced Learner Loan to help you pay for course fees if you are aged 19 and over. This loan is not means tested or credit checked. Repayments only start once you have completed the course and your income is over the threshold. See gov.uk for more information.

**If you complete a Higher Education course this loan will be written off.**

FIND OUT MORE  
[CROYDON.AC.UK/ACCESS](https://croydton.ac.uk/access)



# ART, DESIGN AND FASHION



## Unleash your creativity with our courses in Art, Design, and Fashion!

Our excellent facilities boast modern art, design, and media workshops that provide the perfect setting to hone your skills. Guided by experienced lecturers and industry experts, you'll thrive in a friendly and supportive learning environment.

### FACILITIES AND RESOURCES

Modern art, design and media workshops

---

Photography darkrooms

---

Printmaking and ceramic studios

---

Professional media suite

---

Fashion and textile studios

---

### CAREER INSPIRATION

- Graphic Designer
- Fashion Designer
- Illustrator
- Interior Designer
- Art Director



**CONSIDER THIS SUBJECT IF:** you're interested in managing, innovating, and solving problems in various industries, and exploring business opportunities.



The creative industries contribute **over £100 billion to the UK economy annually**, making it one of the fastest-growing sectors.

## ART & DESIGN

**BTEC Diploma | Level 1 | One Year**

### COURSE OVERVIEW

This course will introduce you to a variety of materials and techniques that will help you progress onto further learning. You will develop your skills and knowledge over the course of the year, learning the transferable and specific sector skills. A variety of topics and materials will include: still life, oil pastels, colouring, mark-making, clay, photography and screen printing.

### ENTRY REQUIREMENTS

You will need a minimum of English and maths at grade 2 or equivalent. Evidence of a commitment to learn and the ability to study at this level shown at interview. You will also need to show an art portfolio, containing recent examples of creative work you have done.

### PROGRESSION

On completion you will be able to progress to Level 2 Diploma in Art & Design, inclusive of Graphic Design and Illustration, and Level 2 Games & Animation.



**I've loved being able to explore different art pathways, that's how I discovered Interior Design. I would definitely recommend Croydon College.**

**NAME:** Aliyah Mahmood

**LEVEL 3 ART & DESIGN**

**FUTURE PLANS:** University to study Interior Design

**FOR FULL COURSE DETAILS, HEAD TO OUR WEBSITE [CROYDON.AC.UK](https://www.croydon.ac.uk)**

## ART & DESIGN, PHOTOGRAPHY AND FASHION

**BTEC Diploma | Level 2 | One Year**

### COURSE OVERVIEW

In our creative workshops, lessons explore creativity and innovation. You will develop new ways of thinking about Art & Design and other pathways such as illustration, image making and photography. You will have the opportunity to develop creative skills and digital portfolio development for the next level of progression to Level 3, while also improving maths and/or English GCSE grades, if needed.

### ENTRY REQUIREMENTS

You will need a minimum of three GCSEs at grade 3 or above including English and maths. Plus, an art portfolio containing recent creative work you have done.

### PROGRESSION

On completion you can progress to higher Level 3 courses from our extensive offer at Croydon College.

## ART & DESIGN

**BTEC Extended Diploma | Level 3 | Two Years**

### COURSE OVERVIEW

This course has been designed to develop specialist, transferable and industry-specific skills to help you progress to higher learning, or creative apprenticeships. You will take part in guided workshops, including studio-based practice such as painting, 3D sculpture, printmaking, photography, digital design, and fashion and textiles. The course is evidence-based, and you will build up creative portfolios which are submitted at two key assessment points.

### ENTRY REQUIREMENTS

You will need a minimum of four GCSEs at grade 4 or above including English and maths, or a related Level 2 vocational qualification. Plus, an art portfolio containing recent creative work you have done.

Mature applicants may be considered on relevant experience without having the required entry requirements. However, an interview will always be required.

### PROGRESSION

On completion, you can progress onto specialist higher education courses or join an apprenticeship programme in the creative industries.

## FASHION & TEXTILES

**BTEC Extended Diploma | Level 3 | Two Years**

---

### COURSE OVERVIEW

You will explore the different disciplines within the fashion industry through workshops and projects. You will learn a number of subject areas, including: research and idea creation, fashion illustration and drawing, fashion design, textile design, fabric manipulation and fashion promotion.

The aim of the course is to equip you with a broad basis of industry-relevant skills and to allow you to progress to either employment within the fashion industry or continue with higher education.

### ENTRY REQUIREMENTS

You will need a minimum of four GCSEs at grade 4 or above including English and maths, or a related Level 2 vocational qualification. Plus, an art portfolio containing recent creative work you have done.

Mature applicants may be considered on relevant experience without having the required entry requirements. However, an interview will always be required.

### PROGRESSION

On completion, you can progress onto higher education, employment or creative apprenticeships.

## PHOTOGRAPHY

**BTEC Extended Diploma | Level 3 | Two Years**

---

### COURSE OVERVIEW

You will be taught a wide range of techniques and application of photography, including: photographic studio practice, darkroom, digital photography, digital post-production, exhibiting work, alternative analogue processes, location photography, portrait, and landscape photography.

This course allows you to develop your portfolio, self-branding, professional and creative behaviours.

### ENTRY REQUIREMENTS

You will need a minimum of four GCSEs at grade 4 or above including English and maths, or a related Level 2 vocational qualification. Plus, an art portfolio containing recent creative work you have done.

Mature applicants may be considered on relevant experience without having the required entry requirements. However, an interview will always be required.

### PROGRESSION

Careers within the creative industries or progression onto university.



# BUSINESS



**Whether you want to start your own business or enjoy a high-flying career with a global brand, a business qualification can give you a head-start.**

Our courses offer much more than just tutor-led classes, you'll also benefit from a wide range of other activities to give you a greater understanding of the business landscape, such as work placements, visits to businesses, and projects with real employers.

## **FACILITIES AND RESOURCES**

**State-of-the-art equipment**

---

**Excellent facilities**

---

**Industry placements**

---

**Experienced teachers**

---

## **CAREER INSPIRATION**

Human Resources Specialist

Marketing Manager

Financial Analyst

Entrepreneur

Business Manager



**CONSIDER THIS SUBJECT IF:** you're interested in managing, innovating, and solving problems in various industries, and exploring business opportunities.



In 2022, there were estimated to be **5.5 million** UK private sector businesses.

## BUSINESS

**BTEC | Level 1 | One Year**

---

### COURSE OVERVIEW

You will need a minimum of English and maths at grade 2 or equivalent. Evidence of a commitment to learn and the ability to study at this level shown at interview.

### ENTRY REQUIREMENTS

You will need a minimum of English and maths at grade 2 or equivalent. Evidence of a commitment to learn and the ability to study at this level shown at interview.

### PROGRESSION

There are lots of industry opportunities, students can go onto study or work in:

- Business and Management
- Travel and Tourism
- Information Technology
- Apprenticeships



**I've enjoyed studying at Croydon College - the staff are really helpful and the campus feels safe and secure.**

**NAME:** Kristian Lubeko

**BTEC LEVEL 3 BUSINESS**

**FUTURE PLANS:** Go to university and start my own business!

FOR FULL COURSE DETAILS, HEAD TO OUR WEBSITE **CROYDON.AC.UK**

## **BUSINESS**

**BTEC | Level 2 | One Year**

---

### **COURSE OVERVIEW**

This course covers units across a wide and exciting range of specialisms. You will learn business skills which you can then put into action. The dynamic teaching team has excellent links with both large and local small employers and part of your learning will be engaging with them to put your skills into practice, networking and developing your business acumen.

### **ENTRY REQUIREMENTS**

You will need a minimum of three GCSEs at grade 3 or above including English and maths, or a related Level 1 vocational qualification. Mature applicants may be considered on relevant experience without having the required entry requirements. However, an interview will always be required.

### **PROGRESSION**

This course provides thorough preparation for the next stage of your career to enable you to progress with confidence to either further study, apprenticeship or employment.

## **BUSINESS**

**BTEC | Level 3 | Two Years**

---

### **COURSE OVERVIEW**

This course allows you to explore different topics, and specialise in either Business and Finance, Business Marketing, or Business Law. This course covers units across a wide and exciting range of specialisms. You will learn business skills which you can then put directly into action. The dynamic teaching team has excellent links with both large and local small employers and part of your learning will be engaging with them to put your skills into practice, networking, and developing your business acumen.

### **ENTRY REQUIREMENTS**

You will need a minimum of four GCSEs at grade 2 or above including English and maths, or a related Level 2 vocational qualification. Mature applicants may be considered on relevant experience without having the required entry requirements. However, an interview will always be required.

### **PROGRESSION**

This course provides thorough preparation for the next stage of your career to enable you to progress with confidence to either further study at university, apprenticeship or employment.





“

**The college was always a place where I felt welcome and encouraged to do my best.**

# CHILDCARE



**If you love children, this subject is for you. Learn how to take care of children and help them grow. Whether you become a teacher or work in child psychology, you'll play a big role in shaping their early years.**

## **FACILITIES AND RESOURCES**

Real-life nursery environments  
(including a sensory room)

---

Staff with up to date industry knowledge

---

A range of bespoke trips and visits

---

Excellent employer links

---

Industry speakers

---

Good progression into employment  
or university

---

## **CONSIDER THIS SUBJECT IF:**

you enjoy nurturing and supporting the development of children

## **CAREER INSPIRATION**

Teacher

Nanny

Au Pair

Childcare Centre Manager

Paediatric Nurse

Social Worker





Working in childcare, along with health care, is among the **most important industries** in society.

## CHILDCARE, HEALTH AND SOCIAL CARE

Level 1 | One Year

### COURSE OVERVIEW

The Level 1 Introductory Certificate will prepare you to undertake study at Level 2 in a subject area of your choice through developing your knowledge and study skills. The course combines some practical activities as well as theory to give an overview of a wide range of subjects.

### ENTRY REQUIREMENTS

You will need a minimum of English and maths at grade 2 or equivalent. Evidence of a commitment to learn and the ability to study at this level shown at interview. In addition, you will need to complete a DBS (Disclosure Barring Service) check once enrolled, which the College will pay for if you are aged between 16–18 when you start.

### PROGRESSION

On completion of this course, you can progress onto a Level 2 programme.



**The teachers are committed to support students, encouraging us to achieve our goals.**

**NAME:** Doncy Makutala

**LEVEL 3 CHILDCARE**

**FUTURE PLANS:** After I finish my course I plan to go to university to study Education.

FOR FULL COURSE DETAILS, HEAD TO OUR WEBSITE **CROYDON.AC.UK**



## CHILDCARE

**NCFE CACHE | Level 2 | One Year**

### COURSE OVERVIEW

This course is suitable for anyone who wants to work, or has just started to work in the Early Years Education Sector. You will gain a broad understanding and knowledge of the early years sector, as well as developing necessary skills. Topics covered include: children's health issues, how to protect children and how to plan for and meet children's needs through play. You will work with children between birth and five years old.

### ENTRY REQUIREMENTS

You will need a minimum of three GCSEs at grade 3 or above including English and maths, or a related Level 1 vocational qualification. In addition, you will need to complete a DBS (Disclosure Barring Service) check once enrolled, which the College will pay for if you are aged between 16-18 when you start.

### PROGRESSION

This course qualifies you to work in the early years sector in a supervised position. You can also progress onto a Level 3 programme, or apprenticeship.

## CHILDCARE

**NCFE CACHE | Level 3 | Two Years**

### COURSE OVERVIEW

This course will prepare you to work with children from birth to five years and gain knowledge of children aged five to seven years. On completion, you will be able to enter the workforce as an early years educator. You will need to be creative, enthusiastic and enjoy working with children.

### ENTRY REQUIREMENTS

You will need a minimum of four GCSEs at grade 4 or above including English and maths, or a related Level 2 vocational qualification. In addition, you will need to complete a DBS (Disclosure Barring Service) check once enrolled, which the College will pay for if you are aged between 16-18 when you start.

### PROGRESSION

Employment as an Early Years Educator, Classroom Learning Support Assistant, Nanny, Child-Minder, or Play Worker. If you wish to go onto further study, you might like to consider university or an apprenticeship. Higher education studying subject areas such as: early years teaching, nursing, midwifery, social work.

## T-LEVELS

### EDUCATION AND CHILDCARE (EARLY YEARS)

**Level 3 | Two Years**

# CONSTRUCTION



**Are you practical? Do you want to learn skills that are always in demand? Our range of construction courses will prepare you to enter the UK's biggest industry.**

## **FACILITIES AND RESOURCES**

Specialist workshops

---

Industry experienced tutors

---

Industry speakers

---

Trips and visits

---

## **CAREER INSPIRATION**

Site Manager

General Builder

Plumber

Carpenter

Health and Safety Officer





The UK construction industry will require an additional **226,000** workers by **2026**.

## CONSTRUCTION

**Entry 3 Certificate | One Year**

### COURSE OVERVIEW

This course provides an introduction to the construction industry and the variety of skills involved. You will cover a range of theory and practical tasks such as tiling, painting, health and safety, effective communication, and a work placement.

### ENTRY REQUIREMENTS

Interest in Construction and commitment to continue the study of English and maths. A satisfactory reference may also be requested.

### PROGRESSION

On completion of this course, you can progress onto a Level 2 programme.

## CONSTRUCTION MULTI-SKILLS

**BTEC | Level 1 | One Year**

### COURSE OVERVIEW

This course will provide you a practical introduction to a variety of skills as well as an introduction to the background knowledge required to succeed. All of these skills are in demand in the industry so you can decide which construction route suits you best. You will be introduced to: Brickwork, Plastering, Woodwork, Painting, Decorating and Tiling.

### ENTRY REQUIREMENTS

Evidence of a commitment to learn and the ability to study at this level shown at interview, including GCSE English and maths at grade 2 or above.

### PROGRESSION

On completion of this course, you can progress onto a Level 2 programme. Alternatively, you could enter employment in the construction industry as an apprentice.



FOR FULL COURSE DETAILS, HEAD TO OUR WEBSITE **CROYDON.AC.UK**

## CONSTRUCTION MAINTENANCE OPERATORS

**BTEC | Level 2 | One Year**

---

### COURSE OVERVIEW

This course will provide you with the practical skills as well as the knowledge and understanding of construction to allow you to pursue a career in this industry. You will learn the basics of how buildings are constructed and how to recognise the common defects in different parts of a building. You will be able to treat and repair these defects to industry standards. You will study a range of subjects including: repairs, diagnosing defects, wall construction, developing customer relations, and health and safety practices.

### ENTRY REQUIREMENTS

You will need a minimum of three GCSEs at grade 3 or above including English and maths, or a related Level 1 vocational qualification. Mature applicants may be considered on relevant experience without having the required entry requirements. However, an interview will always be required.

### PROGRESSION

Completion of this course can lead to progression to our Level 3 BTEC Construction and the Built Environment course. Alternatively, you could enter employment in the construction industry as an apprentice.

## CONSTRUCTION AND BUILT ENVIRONMENT

**BTEC | Level 3 | Two Years**

---

### COURSE OVERVIEW

This course will provide you with an understanding of the construction industry, including: health and safety, maths, science and materials, estimating and surveying. The course is designed to prepare students for working in the construction industry and has been specifically developed for delivery in a training environment using simulated conditions.

### ENTRY REQUIREMENTS

You will need a minimum of four GCSEs at grade 4 or above including English and maths, or a related Level 2 vocational qualification. Mature applicants may be considered on relevant experience without having the required entry requirements. However, an interview will always be required.

### PROGRESSION

The qualification is equivalent to three A Levels, and carries UCAS points which allows you to progress onto university on completion. You may also like to enter the workforce, or take on an apprenticeship.



## PLUMBING

**BTEC | Level 1 | One Year**

---

### COURSE OVERVIEW

This course is designed for those who have an interest in plumbing, with a desire to work in the building services or engineering sector. This qualification will assist in your progression to become a fully qualified plumber and you will develop and practise the skills required for employment and career progression.

You will cover subjects including: Central heating systems, Drainage, Hot and cold water systems, Electrical and scientific principles, and Health and safety practices.

### ENTRY REQUIREMENTS

Evidence of a commitment to learn and the ability to study at this level shown at interview; including GCSE English and maths at grade 2 or equivalent.

### PROGRESSION

Completion of this course can lead on to employment as an apprentice or progression to a Level 3 Plumbing programme.

## CARPENTRY AND JOINERY

**BTEC | Level 1 | One Year**

---

### COURSE OVERVIEW

This course is designed for those who have an interest in carpentry, with a desire to work in the construction sector. This qualification will assist in your progression to become a fully qualified carpenter and you will develop and practise the skills required for employment and career progression. You will study a range of subjects including: health and safety, various aspects of carpentry practical and theory, environment and sustainability, and the construction industry.

## PLUMBING

**BTEC | Level 2 | One Year**

---

### COURSE OVERVIEW

This course is for those who want to work as plumbers in the building services engineering sector. This course will allow you to learn, develop and practise the skills required for employment and/or career progression in the plumbing sector. You will cover subjects including: Hot and Cold water systems, Common plumbing processes, Central heating systems, Drainage systems and Electrical principles and processes. This qualification does not make candidates fully qualified plumbers.

### ENTRY REQUIREMENTS

You will need a minimum of three GCSEs at grade 3 or above including English and maths, or a related Level 1 vocational qualification. Mature applicants may be considered on relevant experience without having the required entry requirements. However, an interview will always be required.

### PROGRESSION

This course will allow you to progress into employment, or onto a Level 3 programme or apprenticeship.

### ENTRY REQUIREMENTS

Evidence of a commitment to learn and the ability to study at this level shown at interview; including GCSE English and maths at grade 2 or equivalent.

### PROGRESSION

On completion of the course you can progress onto a Level 2 programme, or apprenticeship.

# ENGINEERING AND ELECTRICAL



**New developments in technologies mean that the world is constantly evolving. Our courses are designed to help you make your mark in these exciting hands-on industries.**

## **FACILITIES AND RESOURCES**

Investment in new technologies

---

Outstanding teaching facilities and equipment

---

Specialist workshops

---

Industry experienced tutors

---

## **CAREER INSPIRATION**

Engineer

Aerospace engineering

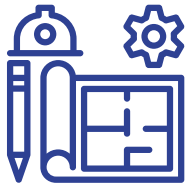
Electronic engineering

Aircraft maintenance

Electrician



**CONSIDER THIS SUBJECT IF:** you're curious about how things work and want to design or work with technology, explore engineering and electrical fields.



The UK is an engineering powerhouse, with the profession generating up to an estimated **645 billion** to the UK economy **annually**.

## ENGINEERING

**BTEC | Level 1 | One Year**

### COURSE OVERVIEW

This course is designed for those who have an interest in engineering, with a desire to have a career within this sector. This course will provide you with the practical experience and the technical knowledge to work in the engineering industry. You will learn the basic fundamentals of mechanical engineering through a combination of theory lessons and practical work in our contemporary engineering workshops.

Subjects covered include: wiring electrical circuits, making engineering components, interpreting and using engineering information, using the bench drill, health and safety practices, and various employability units.

### ENTRY REQUIREMENTS

Evidence of a commitment to learn and the ability to study at this level shown at interview; including GCSE English and maths at grade 2 or equivalent.

### PROGRESSION

Completion of this course can lead to progression to our Level 2 Engineering programme. Alternatively, you can enter employment as an apprentice within the engineering industry.



**Every effort is made to make everything as simple and easy to understand. Concepts that might otherwise be confusing or hard to grasp.**

**NAME:** Andrew Bedingfield

**BTEC LEVEL 2 ELECTRICAL INSTALLATION**

**FUTURE PLANS:** Start my own business!

FOR FULL COURSE DETAILS, HEAD TO OUR WEBSITE **CROYDON.AC.UK**

## ENGINEERING

**BTEC | Level 2 | One Year**

---

### COURSE OVERVIEW

This course is designed for those who have an interest in engineering, with a desire to have a career within this sector. You will gain practical experience and the technical knowledge to work in the engineering industry. You will study a wide range of subjects including: engineering marking out, interpreting and using engineering information, using CAD, casting and moulding, and health and safety practices.

### ENTRY REQUIREMENTS

You will need a minimum of three GCSEs at grade 3 or above including English and maths, or a related Level 1 vocational qualification. Mature applicants may be considered on relevant experience without having the required entry requirements. However, an interview will always be required.

### PROGRESSION

Completion of this course can lead to progression to our Level 3 Engineering programme. Alternatively, you can enter employment as an apprentice within the engineering industry.

## ENGINEERING – 19+ LEARNERS

**BTEC | Level 2 | One Year**

---

### COURSE OVERVIEW

This course is designed for those who have an interest in engineering, with a desire to have a career within this sector. You will gain practical experience and the technical knowledge to work in the engineering industry. You will study a wide range of subjects including: engineering marking out, interpreting and using engineering information, using CAD, casting and moulding, and health and safety practices.

### ENTRY REQUIREMENTS

You will need a minimum of four GCSEs at grade 4 or above including English and maths. You will also need a grade 4 in Science. This course is being offered to 19+ Learners only.

### PROGRESSION

The Level 3 Diploma is equivalent to two A Levels and allows progression onto an Engineering related higher education qualification such as Electrical or Materials Engineering or into employment fields such as Research, Design Engineering, Manufacturing, Quality Assurance and Material Development.

## ELECTRICAL INSTALLATION

**BTEC | Level 1 | One Year**

---

### COURSE OVERVIEW

This qualification is for learners wanting to learn the basic skills and knowledge involved in electrical installations within the construction industry.

### ENTRY REQUIREMENTS

Evidence of a commitment to learn and the ability to study at this level shown at interview; including GCSE English and maths at grade 2 or equivalent.

### PROGRESSION

Progression to Level 2 Electrical Installation.

## ELECTRICAL INSTALLATION

**BTEC | Level 2 | One Year**

### COURSE OVERVIEW

This course will expand your knowledge and skills in order to work in the electrical installation industry. You will learn the intermediate skills of electrotechnical technology through the combination of theory lessons and practical work in our modern, well-equipped workshops. The course will also develop your confidence to conduct repairs and carry out fault finding on electrical circuitry. You will study a range of subjects, including: testing dead circuits, safe isolation procedures, comprehensive metalworking skills, and conduit and trunking.

### ENTRY REQUIREMENTS

You will need a minimum of three GCSEs at grade 3 or above including English and maths, or a related Level 1 vocational qualification. Mature applicants may be considered on relevant experience without having the required entry requirements. However, an interview will always be required.

### PROGRESSION

On completion you can progress onto a Level 3 electrical programme. Alternatively, you could enter employment within the industry or progress to our advanced electrician apprenticeship programme.

## ELECTRICAL INSTALLATION

**BTEC | Level 3 | One Year**

### COURSE OVERVIEW

This qualification is for anyone who wishes to work as an electrician in the building services industry. It has been designed to deliver a high level of occupational skills and provide a platform from which to progress through further learning or into industry employment. You will cover topics including: Working safely and effectively, Design, construct, test and commission electrical systems, Methods of supervision, Electrical science and principles, Regulations and law, Diagnose and repair electrical faults.

This qualification is supported by the JIB (Joint Industry Board). This industry qualification is acknowledged by the Electrotechnical Certification Scheme (ECS).

### ENTRY REQUIREMENTS

You will need a minimum of four GCSEs at grade 4 or above including English and maths, or a related Level 2 vocational qualification. Mature applicants may be considered on relevant experience without having the required entry requirements. However, an interview will always be required.

### PROGRESSION

This technical qualification focuses on the development of knowledge and practical skills needed for working competently in the electrotechnical industry with the aim of eventually becoming a qualified registered electrician.

## T-LEVELS

### MECHANICAL ENGINEERING

**T Level | Level 3 | Two Years**

# ESOL



**If English is new to you, we're here to help you learn. Gain language skills for daily life, work and study. This can lead to more opportunities in a new English-speaking world. Our programmes will develop your grammar and vocabulary through reading, writing, speaking and listening.**

**BEFORE YOU JOIN ONE OF OUR CLASSES, YOU WILL NEED TO COME IN FOR AN ASSESSMENT AND INTERVIEW SESSION, SO WE CAN FIND OUT WHICH CLASS WILL BE BEST FOR YOU.**

## ESOL (ENGLISH FOR SPEAKERS OF OTHER LANGUAGES) - 16-18

All Levels

---

### COURSE OVERVIEW

This course is for students who are 16-18 years of age whose English is a second language. This course will develop your skills in reading, writing, listening and speaking English. As well as studying ESOL, you will study maths and develop the skills needed in the world of work.

This course includes:

- Regular 1 to 1 meetings with your course tutor to support you and check your progress
- Excellent progression opportunities to our vast selection of vocational courses depending on whether the entry criteria is met
- Opportunity to do work experience or work related learning at Entry 3

### ENTRY REQUIREMENTS

You should be literate in your own language and are able to study from pre-entry to Entry 3. You can progress from one level of our ESOL courses to the next. After Entry Level 3, you are ready to progress into employment or onto any of the courses offered by the College at Level 1 depending on entry criteria.

### PROGRESSION

There are no formal entry requirements. We test your abilities before you start and place you on the course that best fits the skills you already have.

You must show at the interview that you are committed to full time studies and keen to develop all of your work skills, not just your English.

## ESOL (ENGLISH FOR SPEAKERS OF OTHER LANGUAGES) - 19+

All Levels

---

### COURSE OVERVIEW

This course is for you if you speak English as a second or other language. We offer exciting classes to help you improve your skills from Pre-Entry to Level 2 both full and part time including evenings for some levels. As well as improving your speaking, listening, reading and writing skills you will prepare to progress to another college course or the next level of English. You will also improve the skills you need to either get a job or existing skills such as working in a team, communication skills and researching future careers.

### ENTRY REQUIREMENTS

There are no formal entry requirements. We test your abilities before you start and place you on the course that best fits the skills you already have. You must show at interview that you are committed to your studies and keen to develop all of your work skills, not just your English.

### PROGRESSION

You can progress from one level of our English for Progression courses to the next. After Entry Level 3, you are ready to progress into employment or onto any of the courses offered by the College at Level 1. Many students from Level 1 go onto higher level courses but continue with their English studies with us at Level 2.

# HAIR AND BEAUTY



**Unleash your creativity in the world of hair and beauty. Learn to style hair, do makeup, and make people feel great. From salons to fashion, your skills will help you shine.**

## **FACILITIES AND RESOURCES**

Industry standard training salons

---

Work on real clients

---

Experienced lecturers

---

Trips and visits

---

## **CAREER INSPIRATION**

Hairdresser

Barber

Beauty Therapist

Make-up Artist

Dermal Therapist



## **CONSIDER THIS SUBJECT IF:**

you're passionate about styling and aesthetics, and making people feel good!





In **2022**, there were more than **48,000** hair and beauty businesses operating in the UK

## HAIR AND BEAUTY

**BTEC | Level 1 | One Year**

### COURSE OVERVIEW

This course will provide an introduction to a wide variety of hair and beauty skills. This programme consists of theory and practical sessions, developing your skills in make-up, shampooing and treatments, manicures, pedicures and blow-drying. You will also enhance your customer service skills by working with the public in our reception area whilst being supervised by our receptionist.

### ENTRY REQUIREMENTS

You will need a minimum of three GCSEs at grade 3 or above including English and maths, or a related Level 1 vocational qualification. Mature applicants may be considered on relevant experience without having the required entry requirements. However, an interview will always be required.

### PROGRESSION

On completion, you can progress onto Level 3 Beauty Therapy or Level 2 Hairdressing, or enter employment with an apprenticeship.

## BEAUTY THERAPY

**BTEC | Level 2 | One Year**

### COURSE OVERVIEW

This course is aimed at those wishing to work in the beauty industry. You will develop the necessary knowledge, understanding and skills to do: Facial skincare, Eyelash and brow treatments, Waxing techniques, Manicure and Pedicure treatment, Applying makeup, Client care, Health and safety guidelines.

### ENTRY REQUIREMENTS

You will need a minimum of four GCSEs at grade 4 or above including English and maths, or a related Level 2 vocational qualification. Mature applicants may be considered on relevant experience without having the required entry requirements. However, an interview will always be required.

### PROGRESSION

On completion, you can progress onto Level 3 Beauty Therapy or Level 2 Hairdressing, or enter employment with an apprenticeship.

FOR FULL COURSE DETAILS, HEAD TO OUR WEBSITE **CROYDON.AC.UK**

## HAIRDRESSING

VRQ | Level 2 | One Year

### COURSE OVERVIEW

This course has been designed to develop your practical skills in a broad range of women's hairdressing skills and gain the employability skills needed to become a successful hairdresser. You will also be expected to participate in relevant work experience. You will cover a range of topics including Health and safety, Client consultation, Shampoo and conditioning for hair and scalp, Promote products and services to clients, Cut women's hair, Colour and lighten hair, Perm and neutralise hair, Salon reception duties.

### ENTRY REQUIREMENTS

You will need a minimum of three GCSEs at grade 3 or above including English and maths, or a related Level 1 vocational qualification. Mature applicants may be considered on relevant experience without having the required entry requirements. However, an interview will always be required.

### PROGRESSION

On completion of this course, you could progress onto Level 3 Hairdressing, an apprenticeship or enter employment as a junior stylist in a salon.

## BARBERING

NVQ | Level 2

### COURSE OVERVIEW

The course in barbering is designed for students who work in or wish to pursue a career in barbering. It provides the necessary skills and knowledge that prove occupational competence as a junior barber.

You will learn a range of introductory skills, as well as core knowledge, relevant to barbering and customer service, alongside generic employability skills.

### ENTRY REQUIREMENTS

You do not need any prior qualifications or a specific level of attainment to take this qualification, although proficiency in English and math needs to be demonstrated.

### PROGRESSION

On completion, you can progress onto the Level 3 in Barbering. Alternatively, you can enter the workforce. This qualification will allow you to work as a junior barber.



## BEAUTY THERAPY

City & Guilds | Level 3 | One Year

---

### COURSE OVERVIEW

This course will develop and build upon the techniques that you will have learnt on a Level 2 course, enabling you to become an advanced, highly qualified and professional spa therapist. You will develop your advanced beauty skills in areas such as face and body electrical treatments, body massage, hot stone therapy, flotation and various spa services.

### ENTRY REQUIREMENTS

You will need a minimum of four GCSEs at grade 4 or above including English and maths, or a related Level 2 vocational qualification. Mature applicants may be considered on relevant experience without having the required entry requirements. However, an interview will always be required.

### PROGRESSION

On completion of this course, you will be fully qualified as an advanced beauty therapist, which will enable you to demonstrate your newly acquired skills and knowledge at a higher level for employability or higher education with university pathways. Through numerous links, we have helped newly qualified stylists and therapists to seek employment within top salons, spas and boutiques.

## HAIRDRESSING

City & Guilds | Level 3 | One Year

---

### COURSE OVERVIEW

This course will develop and build on the skills that you will have learnt on a Level 2 course, enabling you to become an advanced, highly qualified and professional hairdresser and enhancing the skills needed for employability or university pathways. This programme will consist of theory and practical sessions and will develop your skills in advanced cutting, colour correction and the application of creative colour, style and dressing hair and creative hair design skills.

### ENTRY REQUIREMENTS

You will need a minimum of four GCSEs at grade 4 or above including English and maths, or a related Level 2 vocational qualification. Mature applicants may be considered on relevant experience without having the required entry requirements. However, an interview will always be required.

### PROGRESSION

On completion of this course, you will be fully qualified as an advanced hairdresser so you can enter the workforce. Alternatively, you can continue your study by going to university.

# HEALTH AND SOCIAL CARE



**Make a difference by caring for others. Learn how to support people's health and wellbeing. You could work in hospitals, homes, or communities, helping those in need.**

## **FACILITIES AND RESOURCES**

Staff with up to date industry knowledge

---

A range of bespoke trips and visits

---

Excellent employer links

---

Industry speakers

---

Health Care Conference

---

Good progression into employment or university

---

## **CAREER INSPIRATION**

Care Workers

Healthcare Assistants

Support Worker

Nurse



## **CONSIDER THIS SUBJECT IF:**

you're caring and want to make a difference to people's wellbeing.



The social care sector employs **1.48 million people** and will have **half a million extra jobs** available by **2030**.

## CHILDCARE, HEALTH AND SOCIAL CARE

**NCFE CACHE | Level 1 | One Year**

### COURSE OVERVIEW

This course will provide you with an understanding of how health and social care services work, as well as knowledge about the care needs of a wide range of people of all ages and backgrounds. You will cover a wide range of subjects allowing you to build on your study skills and gain important knowledge that will help you be successful in your chosen study or career.

### ENTRY REQUIREMENTS

You will need a minimum of English and maths at grade 2 or equivalent. Evidence of a commitment to learn and the ability to study at this level shown at interview. You will also need to complete a DBS (Disclosure Barring Service) check once enrolled, which the College will pay for if you are aged between 16-18 when you start the course.

### PROGRESSION

On completion you can progress onto a Level 2 programme at the College, or apprenticeship.



**I liked that the College is diverse and it is really welcoming.**

**NAME:** Malia Johnson

**LEVEL 3 CACHE CERTIFICATE/EXTENDED DIPLOMA IN HEALTH AND SOCIAL CARE**

FOR FULL COURSE DETAILS, HEAD TO OUR WEBSITE **CROYDON.AC.UK**

## HEALTH AND SOCIAL CARE

**BTEC | Level 2 | One Year**

---

### **COURSE OVERVIEW**

This one year course aims to give a broad understanding of the knowledge and skills that are essential when working with people. You will develop and sustain an interest in health, early years and education, social care, youth and community and issues that affect the care sector.

### **ENTRY REQUIREMENTS**

You will need a minimum of three GCSEs at grade 3 or above including English and maths, or a related Level 1 vocational qualification. You will also need to complete a DBS (Disclosure Barring Service) check once enrolled, which the College will pay for if you are aged between 16-18 when you start the course.

### **PROGRESSION**

On completion of this course, you can progress onto a Level 3 programme, or into the workplace.

## HEALTH AND SOCIAL CARE

**Level 3 BTEC Diploma/Extended Diploma  
Two Years**

---

### **COURSE OVERVIEW**

You will gain knowledge and understanding essential to the health and social care sector, supporting progression to further learning or the workplace.

You will be provided with the opportunity of participating in community charity events, visits to Health & Care settings and museums as well as work placement.

### **ENTRY REQUIREMENTS**

You will need a minimum of four GCSEs at grade 4 or above including English and maths, or a related Level 2 vocational qualification. You will also need to complete a DBS (Disclosure Barring Service) check once enrolled, which the College will pay for if you are aged between 16-18 when you start the course.

Mature applicants may be considered on relevant experience without having the required entry requirements. However, an interview will always be required.

### **PROGRESSION**

On completion, you can enter the workforce or continue your study on a higher education programme at university.

## HEALTH AND SOCIAL CARE

NFCE CACHE | Level 3 | Two Years

### COURSE OVERVIEW

This course will introduce you to a number of core health and social care topics, and develop your knowledge in three key subject areas, each vital to a successful career as a health and social care professional.

### ENTRY REQUIREMENTS

You will need a minimum of four GCSEs at grade 4 or above including English and maths, or a related Level 2 vocational qualification.

Mature applicants may be considered on relevant experience without having the required entry requirements. However, an interview will always be required.

### PROGRESSION

This course can lead to employment in a wide range of roles, in health and social care environments. You may also progress onto university.

“  
**The teachers are so helpful, always being supportive.**



# HOSPITALITY AND CATERING



**The Hospitality and Catering industry is fast paced and provides plenty of scope for career development and opportunities for working at home and abroad. You will gain valuable hands-on experience in our well-equipped professional kitchens.**

## **FACILITIES AND RESOURCES**

Industry-standard kitchen and facilities

---

On-site restaurant open to the public

---

Educational trips and regular guest speakers

---

## **CAREER INSPIRATION**

Chef

Restaurant Manager

Event Planner

Hotel Manager

Food Critic



**CONSIDER THIS SUBJECT IF:** you enjoy serving others and creating memorable experiences through food and service, hospitality and catering could be a good fit.



## COOKERY AND HOSPITALITY

Laser | Entry 3 | One Year

---

### COURSE OVERVIEW

This course is designed to provide the knowledge, understanding and practical skills needed to work in the hospitality sector. This qualification is a prerequisite for Level 1 hospitality or professional cookery qualifications.

### ENTRY REQUIREMENTS

Interest in chosen course and aspiration to continue the study of English and maths. A satisfactory reference may also be requested.

### PROGRESSION

On completion of this course you can progress onto a Level 1 programme or you could progress into employment or self-employment as a chef. Other potential roles at this level could include: Catering manager, Restaurant manager, Kitchen Assistant.

## COOKERY

City & Guilds | Level 2 | One Year

---

### COURSE OVERVIEW

This course is designed for those who are keen to pursue a career in hospitality and catering establishments. It will provide you with the latest skills and approach to hospitality industry practices, food safety, and health and safety. It will also give you a good foundation in a wide range of cooking skills to apply across a variety of catering contexts. All of this is essential grounding for those keen to progress in catering and to develop high standards.

### ENTRY REQUIREMENTS

You will need a minimum of three GCSEs at grade 3 or above including English and maths, or a related Level 1 vocational qualification.

## COOKERY

City & Guilds | Level 1 | One Year

---

### COURSE OVERVIEW

On this course you will build the foundation skills to be developed within the workplace, including the ability to prepare and cook a range of commodities. You will also study a range of topics to gain a broad understanding of all aspects of kitchen operations, essential for those aspiring to work in the industry.

### ENTRY REQUIREMENTS

You will need a minimum of English and maths at grade 2 or equivalent. Evidence of a commitment to learn and the ability to study at this level shown at interview.

### PROGRESSION

On completion of you can progress on to a Level 2 programme, or enter the workplace as a Restaurant Manager or Chef.

### PROGRESSION

Completion of this course can lead to progression to our Level 3 cookery programme. Alternatively, you can seek employment as an apprentice within the industry or this qualification can lead to First Commis Chef positions with appropriate experience.

Former students have gone on to work in top hotels and restaurants.

# INFORMATION TECHNOLOGY (IT)



**Enter the tech world and learn about computers and software. From fixing IT problems to creating apps, your skills will be in demand in today's digital age.**

## **FACILITIES AND RESOURCES**

Advanced technology

---

Industry standard software

---

Expert tutors

---

Industry speakers

---

## **CAREER INSPIRATION**

Software Developer

Cybersecurity

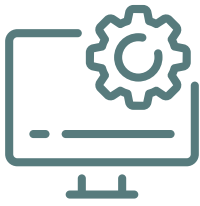
Web Developer

IT Consultant

DevOps Engineer



**CONSIDER THIS SUBJECT IF:** you love technology and problem-solving, the IT field offers various roles in digital systems and software.



The IT job market in the UK has traditionally been strong, with a **high demand** for skilled IT professionals.

## IT

**BTEC | Level 2 | One Year**

---

### **COURSE OVERVIEW**

The course will help you build up a portfolio of coursework and experience to support your future career.

This course includes a wide range of activities which include role plays, presentations and practical sessions which lend themselves to real life projects. These projects can include installing computer hardware and software, designing and creating websites and games including an introduction to basic coding.

### **ENTRY REQUIREMENTS**

You will need a minimum of three GCSEs at grade 3 or above including English and maths, or a related Level 1 vocational qualification.

Mature applicants may be considered on relevant experience without having the required entry requirements. However, an interview will always be required.

### **PROGRESSION**

Successful completion will allow you to progress onto a Level 3 programme. Alternatively you can enter employment or an apprenticeship.

## IT

**BTEC | Level 3 | Two Years**

---

### **COURSE OVERVIEW**

On this course you will experience both theoretical and practical study of both computer and IT related topics. You will follow a wide range of units designed to provide an excellent platform for learners wishing either to progress towards a course in higher education or to enter employment in the IT industry. This course has been developed to focus on skills required in today's IT environment and is particularly geared towards those interested in computers and software engineering.

### **ENTRY REQUIREMENTS**

You will need a minimum of four GCSEs at grade 4 or above including English and maths, or a related Level 2 vocational qualification

Mature applicants may be considered on relevant experience without having the required entry requirements. However, an interview will always be required.

### **PROGRESSION**

On completion you can progress onto further study on a university level programme. Alternatively, you can progress directly to employment.

**FOR FULL COURSE DETAILS, HEAD TO OUR WEBSITE [CROYDON.AC.UK](https://www.croydon.ac.uk)**

# MEDIA, ESPORTS AND ANIMATION



**Bring stories to life through media and animation. Learn about filming, gaming, and design. Our excellent facilities will allow you to study in an environment that gives you the real-life experience of industry.**

## **FACILITIES AND RESOURCES**

Industry standard software

---

Esports gaming suite

---

Competition opportunities

---

Trips and visits

---

## **CAREER INSPIRATION**

Professional Gamer

Content Creator

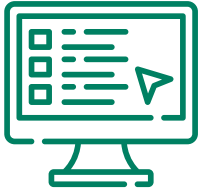
Media Producer

Esports Marketing

Animator



**CONSIDER THIS SUBJECT IF:** you're creative and fascinated by media, gaming, or animation, explore this sector for exciting opportunities.



Gaming & Esports is a vibrant and **fast-growing sector**, powered largely by the passion of **3 billion enthusiasts** around the globe.

## DIGITAL MEDIA

**BTEC | Level 1 | One Year**

### COURSE OVERVIEW

This is a perfect course for anyone who is looking to gain a solid foundation in the exciting and rapidly growing field of digital media. You will be exposed to a wide range of practical skills and theoretical knowledge that will prepare them for a successful career in the digital media industry.

### ENTRY REQUIREMENTS

You will need a minimum of English and maths at grade 2 or equivalent. Evidence of a commitment to learn and the ability to study at this level shown at interview.

### PROGRESSION

Successful completion will allow you to progress onto a Level 2 programme.



**I've really enjoyed learning new skills and working with different software. I plan to get a job in the industry in the future.**

**NAME:** Thierry Sakagami

**LEVEL 3 GAMES AND ANIMATION**

FOR FULL COURSE DETAILS, HEAD TO OUR WEBSITE **CROYDON.AC.UK**

## GAMES AND ANIMATION

**BTEC | Level 2 | One Year**

### COURSE OVERVIEW

You will learn to specialise in Games and Animation including the opportunity to develop transferable skills related to study and vocational application that provide a platform for success both within Art and Design and elsewhere. Topics include: Digital Games Production, Animation for Digital Media, Digital Games Testing, Digital Moving Image Production, Deconstructing Media Products.

### ENTRY REQUIREMENTS

You will need a minimum of three GCSEs at grade 3 or above including English and maths, or a related Level 1 vocational qualification.

Mature applicants may be considered on relevant experience without having the required entry requirements. However, an interview will always be required.

### PROGRESSION

On completion you will be able to progress to Level 3 Diploma in Games Design or Level 3 Diploma in Animation and Visual Effects.

## ESPORTS

**BTEC | Level 2 | One Year**

### COURSE OVERVIEW

This course is designed for those wishing to develop skills within the esports and related industries. This course will teach you the essential skills and fundamental knowledge that underpin the Esports business, and covers games, teams, and tournament play; streaming; starting an enterprise and planning an event; and allows you to choose between game design or exploring health and wellbeing in Esports.

### ENTRY REQUIREMENTS

You will need a minimum of three GCSEs at grade 3 or above including English and maths, or a related Level 1 vocational qualification.

Mature applicants may be considered on relevant experience without having the required entry requirements. However, an interview will always be required.

### PROGRESSION

On completion of this course, you can progress to a Level 3 programme.



## ESPORTS

**BTEC | Level 3 | Two Years**

### COURSE OVERVIEW

The emphasis is on the development of skills needed to be successful in the Esport industry, including entrepreneurship, innovation, teamwork, communication, leadership skills, confidence building, decision-making, reaction times, reading comprehension skills, cyber skills and concentration.

### ENTRY REQUIREMENTS

You will need a minimum of four GCSEs at grade 4 or above including English and maths, or a related Level 2 vocational qualification.

Mature applicants may be considered on relevant experience without having the required entry requirements. However, an interview will always be required.

### PROGRESSION

On completion of this qualification, you can progress onto employment or Higher Education.

## GAMES, ANIMATION AND DIGITAL MEDIA

**BTEC | Level 3 | Two Years**

### COURSE OVERVIEW

This course is designed to give you a technical understanding of film and television visual effects. You will produce film and television visual effects through practical projects and gain knowledge and skills in areas such as storyboarding, 2D and 3D animation, compositing and rendering techniques. Topics include: Digital Media Skills, Visual Effects, 2D Animation, Film Production, 3D Digital Animation.

### ENTRY REQUIREMENTS

You will need a minimum of four GCSEs at grade 4 or above including English and maths, or a related Level 2 vocational qualification. In addition, a portfolio or show-reel containing recent examples of artwork, sketchbooks, photography work, or any creative work you have done. This could be both course work and work you have created in your own time.

Mature applicants may be considered on relevant experience without having the required entry requirements. However, an interview will always be required.

### PROGRESSION

On completion you can progress onto Higher Education, an apprenticeship or employment.

## T-LEVELS

### DIGITAL PRODUCTION DESIGN AND DEVELOPMENT

**T Level | Level 3 | Two Years**

# MOTOR VEHICLE



**Get your hands on engines and machine, and learn how to fix and maintain vehicles. With these skills, you could work in garages, dealerships, or even run your own repair shop.**

## **FACILITIES AND RESOURCES**

Industry standard workshops

---

Experienced lecturers

---

**Trips and visits to:**

Brands Hatch BMW training at Reading  
The Mini production line based at Oxford

---

## **CAREER INSPIRATION**

Automotive Designer

Electric Vehicle (EV) Engineer

Mechanic

Motorsports Technician

Vehicle Safety Engineer



**CONSIDER THIS SUBJECT IF:** you're passionate about cars, mechanics and the developing technology around electric vehicles.





The automotive industry contributes significantly to **global manufacturing employment**.

## MOTOR VEHICLE MECHANICS

**BTEC | Level 1 | One Year**

### COURSE OVERVIEW

This course is designed for those who have a passion for cars as well as an interest in the maintenance of vehicles. This course will provide you with an introduction to the industry, as well as the practical experience and the technical knowledge needed to work in the automotive industry. You will learn how to carry out maintenance and repairs on cars, vans, and other light vehicles in our modern, fully equipped workshops.

### ENTRY REQUIREMENTS

You will need a minimum of English and maths at grade 2 or equivalent. Evidence of a commitment to learn and the ability to study at this level shown at interview.

### PROGRESSION

Completion of this course can lead to progression to our Level 2 vehicle maintenance programme. Alternatively, you could enter employment within the motor industry as an apprentice.



**The facilities at Croydon College are amazing. The College is always investing in new equipment too.**

FOR FULL COURSE DETAILS, HEAD TO OUR WEBSITE **CROYDON.AC.UK**

## MOTOR VEHICLE MECHANICS

**BTEC | Level 2 | One Year**

### COURSE OVERVIEW

On this course, you will learn how to carry out maintenance and repairs on cars, vans, and other light vehicles in our modern, fully equipped workshops. You will also gain a broad knowledge and understanding of health and safety in the workplace and other skills associated with working in a garage.

### ENTRY REQUIREMENTS

You will need a minimum of three GCSEs at grade 3 or above including English and maths, or a related Level 1 vocational qualification

Mature applicants may be considered on relevant experience without having the required entry requirements. However, an interview will always be required.

### PROGRESSION

Completion of this course can lead to progression to our Level 3 vehicle technology programme. Alternatively, you could enter employment within the motor industry as an apprentice.

## MOTOR VEHICLE MECHANICS

**BTEC | Level 3 | One Year**

### COURSE OVERVIEW

On this course you will study both the theory and practical aspects of Chassis Technology, Engine Technology, Transmission Technology and Electrical and Electronic Technology. You will also gain a broad knowledge and understanding of health and safety in the workplace and other skills associated with working in a garage.

### ENTRY REQUIREMENTS

You will need a minimum of four GCSEs at grade 4 or above including English and maths, or a related Level 2 vocational qualification.

Mature applicants may be considered on relevant experience without having the required entry requirements. However, an interview will always be required.

### PROGRESSION

On completion of this course you can start an apprenticeship or go into Industry, to work as technician.



“

**I love how the  
College is so diverse  
and welcoming.**



## NEW ELECTRIC VEHICLE COURSES

We've launched a new range of electric vehicle courses in our refitted Electric Vehicle Training Centre. Accredited by IMI.

As a full time student, you will have the option to add electric vehicle modules to your study programme. We offer Level 1 to Level 4.

**FOR MORE INFORMATION, VISIT  
CROYDON.AC.UK/ELECTRIC-VEHICLE-TRAINING**



# PERFORMING ARTS AND MUSIC



**Take the stage with confidence. Learn acting, dancing, or music skills. Whether you dream of performing or teaching, you'll be part of the world of arts.**

## **FACILITIES AND RESOURCES**

Opportunity to take part in shows and performances

---

Trips and visits

---

Industry experienced lecturers

---

## **CAREER INSPIRATION**

Actor

Dancer

Musician

Music Producer

Choreographer



## **CONSIDER THIS SUBJECT IF:**

you love performing or creating music and want to express yourself artistically.



The arts and culture industry has grown **£390 million** in a year and now contributes **£10.8 billion** a year to the UK economy.

## MUSIC

**BTEC | Level 2 | One Year**

### COURSE OVERVIEW

Are you wanting to start your journey into a music career? Do you want to learn about how to create music in industry standard studio spaces? This music course teaches you the skills you need to start a career in music including: Composing tracks using DAWs such as Logic Pro and Ableton, Recording vocals and instruments in industry standard studios, Studying the music industry.

### ENTRY REQUIREMENTS

You will need a minimum of three GCSEs at grade 3 or above including English and maths, or a related Level 1 vocational qualification.

If you are a performer you will need to audition two pieces on your chosen instrument or as a vocalist. You will need to bring the backing tracks in for the audition or have the YouTube links for the instrumental version of the song. You may also audition your own compositions. If you are a producer you will need to bring in two projects you have worked on previously to play and discuss how you created the tracks.

Mature applicants may be considered on relevant experience without having the required entry requirements. However, an interview will always be required.

### PROGRESSION

On completion of the Level 2 course you will be able to progress onto the Level 3 Music Technology.



**I love being given creative freedom and being allowed to showcase my work.**

**NAME:** Rashaun Taylor

**LEVEL 3 PERFORMING ARTS**

**FOR FULL COURSE DETAILS, HEAD TO OUR WEBSITE [CROYDON.AC.UK](https://www.croydon.ac.uk)**

## MUSIC TECHNOLOGY

**BTEC | Level 3 | Two Years**

---

### COURSE OVERVIEW

Do you want to learn how to make your own beats? Or create studio recordings and live performances that inspire your audience? This music technology course teaches you the skills you need to start a career in music including: recording vocals and instruments in the studio, producing tracks using industry standard DAWs such as Logic Pro and Ableton, performing live or working as the live sound engineer.

### ENTRY REQUIREMENTS

You will need a minimum of four GCSEs at grade 4 or above including English and maths, or a related Level 2 vocational qualification.

If you are a performer you will need to audition two pieces on your chosen instrument or as a vocalist. You will need to bring the backing tracks in for the audition or have the YouTube links for the instrumental version of the song. You may also audition your own compositions. If you are a producer you will need to bring in two projects you have worked on previously to play and discuss how you created the tracks.

Mature applicants may be considered on relevant experience without having the required entry requirements. However, an interview will always be required.

### PROGRESSION

On completion, you will be able to progress onto a degree course at university.

## PERFORMING ARTS

**BTEC | Level 3 | Two Years**

---

### COURSE OVERVIEW

This course has been designed to allow students with a passion for acting and performing, regardless of their previous training or level of knowledge, to acquire the practical skills and subject knowledge to progress steadily throughout the course and progress to year two. The aim of the course is to introduce you to the fundamental skills of acting and performing with a view to progress to the extended diploma and then onto higher education or working in the industry.

### ENTRY REQUIREMENTS

You will need a minimum of four GCSEs at grade 4 or above including English and maths, or a related Level 2 vocational qualification.

### PROGRESSION

There are many pathways open to you following completion of this course, whether you want to continue your training and education at drama school or university, enter the industry as a working professional.

**FOR FULL COURSE DETAILS, HEAD TO OUR WEBSITE [CROYDON.AC.UK](https://www.croydon.ac.uk)**



“

**People are so friendly here, I've made lots of new friends.**

# PUBLIC SERVICES



**Do you want to have a career that enables you to make a difference in your community? Working in the Public Services can offer exciting and worthwhile career opportunities.**

## **FACILITIES AND RESOURCES**

Trips and visits

---

Guest speakers

---

Work experience opportunities

---

On-site gym

---

## **CAREER INSPIRATION**

Police Officer

Firefighter

Prison Officer

Armed Services

Civil Service



**CONSIDER THIS SUBJECT IF:** you're passionate about helping your community and ensuring safety, explore careers in public services.





Working in the public services industry is a great way of **helping your community** and country and it's also a **prestigious occupation**.

## PUBLIC SERVICES

**BTEC | Level 1 | One Year**

### COURSE OVERVIEW

This course will introduce you to the role of public services – including the police, prisons, ambulance, fire and rescue services, army, navy, marines and air force. The Level 1 course will prepare you with knowledge and study skills that will then enable you to study Level 2 in a subject area of your choice. The course combines some practical activities as well as theory to give you an overview of a wide range of subjects.

### ENTRY REQUIREMENTS

You will need a minimum of English and maths at grade 2 or equivalent. Evidence of a commitment to learn and the ability to study at this level shown at interview.

### PROGRESSION

On completion, you can progress to a Level 2 programme.



**I chose to study at Croydon College because it will help me achieve my goals and dream profession.**

FOR FULL COURSE DETAILS, HEAD TO OUR WEBSITE **CROYDON.AC.UK**



“

**The college was always a place where I felt welcome and encouraged to do my best.**

## **PUBLIC SERVICES**

**BTEC | Level 2 | One Year**

---

### **COURSE OVERVIEW**

Public Services courses are designed to improve and develop your skills and knowledge to enter the uniformed public services such as the police, fire service, ambulance service, army, royal air force, royal navy or prison service. You will study a range of topics including teamwork, emergency incidents, volunteering, navigation and health and fitness.

### **ENTRY REQUIREMENTS**

You will need a minimum of three GCSEs at grade 3 or above including English and maths, or a related Level 1 vocational qualification.

Mature applicants may be considered on relevant experience without having the required entry requirements. However, an interview will always be required.

### **PROGRESSION**

On complete, you can progress onto the Level 3 Uniformed Public Services to further develop your understanding and knowledge to prepare you for a career in public services.

## **PUBLIC SERVICES**

**BTEC | Level 3 | Two Years**

---

### **COURSE OVERVIEW**

This course is a brilliant option for students who are seeking to further develop their skills and knowledge in preparation for a career within the emergency services, Police, Fire services, Armed Forces and Security work. You will cover a range of topics including crime and the impact on society, behaviour in the employment sector, sports and recreational activities, responding to incidents.

You will also benefit from external trips and camps where you develop your map and compass skills, team work skills and leadership skills which are all integral to the uniformed services.

### **ENTRY REQUIREMENTS**

You will need a minimum of four GCSEs at grade 4 or above including English and maths, or a related Level 2 vocational qualification.

Mature applicants may be considered on relevant experience without having the required entry requirements. However, an interview will always be required.

### **PROGRESSION**

This course will support in applying for higher education or with progressing into a career across a range of uniformed and non-uniformed public services including: Armed forces (Army, Navy, Royal Air force), Police, UK Border agency, Fire services, Prison services, security, dog handling, Immigration.

**FOR FULL COURSE DETAILS, HEAD  
TO OUR WEBSITE [CROYDON.AC.UK](https://www.croydon.ac.uk)**

# SCIENCE



**Explore the mysteries of the world through science. Learn about experiments and research. With these skills, you could work in labs, healthcare, or even make new discoveries.**

## **FACILITIES AND RESOURCES**

Experienced lecturers

---

Dedicated science facilities  
and equipment

---

Trips and visits

---

Guest speakers

---

## **CAREER INSPIRATION**

Research Technician

Data Scientist

Radiographer

Doctor

Pharmacology



**CONSIDER THIS SUBJECT IF:** you're curious about the natural world and enjoy investigating, the field of science has a wide range of career opportunities.



The Science industry encompasses a variety of disciplines, including STEM subjects such as **mathematics, physics, chemistry and biology**, but also the social sciences.

## APPLIED SCIENCE

**BTEC | Level 2 | One Year**

### COURSE OVERVIEW

This course will provide you with an interesting and stimulating approach to the study of science. This course covers a wide range of scientific disciplines and is a good choice if you are interested in developing an understanding of science and how to solve scientific problems. As part of the course you will be able to undertake your own scientific research project as well as completing practical assessments. Course units will cover aspects of physics, chemistry, biology, the environment, health and disease and the universe.

### ENTRY REQUIREMENTS

You will need a minimum of three GCSEs at grade 3 or above including English and maths, or a related Level 1 vocational qualification.

Mature applicants may be considered on relevant experience without having the required entry requirements. However, an interview will always be required.

### PROGRESSION

Completion of this course can lead to progression to higher level programmes, such as the Level 3 in Applied Science.



**I've really enjoyed my time at Croydon College. The teachers have been stars for me! Always offering advice and guidance.**

**NAME:** Ashwini Ajith

**LEVEL 3 IN APPLIED SCIENCE**

**FOR FULL COURSE DETAILS, HEAD TO OUR WEBSITE [CROYDON.AC.UK](https://www.croydon.ac.uk)**



## **APPLIED SCIENCE**

**BTEC | Level 3 | Two Years**

---

### **COURSE OVERVIEW**

This course is designed for those wishing to progress into Higher Education courses in the Applied Science sector before entering employment. You will study across all three sciences: Biology, Chemistry and Physics covering topics including: fundamental chemical and physical principals, structure and function of cells, physiology and disease, electromagnetic waves and satellite communication amongst many other fascinating areas of cutting edge science. You will also be guided through your own scientific research project.

### **ENTRY REQUIREMENTS**

You will need a minimum of four GCSEs at grade 4 or above including English and maths, or a related Level 2 vocational qualification.

Mature applicants may be considered on relevant experience without having the required entry requirements. However, an interview will always be required.

### **PROGRESSION**

On completion you can progress onto further study or employment with training. Former students have gone to well respected universities such as UCL, King's College London, Queen Mary, and Sussex to study a wide variety of medical and pharmacy related degrees.



“

**The Careers team have been great, offering advice and guidance for progression after college.**

# SPORTS



**Turn your love for sports into a career. Learn about fitness, coaching, and sports therapy. You'll be ready to work in sports clubs, schools, or health settings.**

## **FACILITIES AND RESOURCES**

Industry experienced lecturers

---

On-site gym

---

Work experience opportunities

---

Trips and visits

---

## **CAREER INSPIRATION**

Athlete

Coach

Sports Psychology

Physiotherapist

Sports Nutritionist

Personal Trainer



## **CONSIDER THIS SUBJECT IF:**

you're enthusiastic about fitness and sports, explore career paths in the sports industry.





Sport and physical activity contribute **£39 billion** to the UK's economy and the sports landscape comprises a wide array of sports organisations.

## SPORT

**BTEC | Level 1 | One Year**

### COURSE OVERVIEW

This qualification will develop your skills and knowledge in sport, exercise and fitness. You will also gain personal transferable skills that can be applied to the workplace or further study. You will need to have a passion for sport and an interest in exploring the different areas of this area including health, fitness, performance, coaching, sports science and events.

### ENTRY REQUIREMENTS

You will need a minimum of English and maths at grade 2 or equivalent. Evidence of a commitment to learn and the ability to study at this level shown at interview.

### PROGRESSION

On completion, you can progress onto a Level 2 programme.

## SPORT

**BTEC | Level 2 | One Year**

### COURSE OVERVIEW

This course is ideal if you are interested in all types of sport, fitness and exercise. You will study three different aspects of sport, preparing you appropriately for advanced study. You will cover: Applied Sports Science, Sports in Society, Personal Fitness, Lifestyle and wellbeing, Training for personal fitness, Injury and the sports performer, Profiling sports performance.

### ENTRY REQUIREMENTS

You will need a minimum of three GCSEs at grade 3 or above including English and maths or a related Level 1 vocational qualification.

Mature applicants may be considered on relevant experience without having the required entry requirements. However, an interview will always be required.

### PROGRESSION

This course is a brilliant stepping stone for an Advanced Apprenticeship or our full time Level 3 Sports Diploma preparing students for university or employment in a wide range of sport related careers.

FOR FULL COURSE DETAILS, HEAD  
TO OUR WEBSITE **CROYDON.AC.UK**



“

**Don't stress yourself out over work, the teachers are there to help.**

## GYM INSTRUCTING

**NCFE | Level 2 | One Year**

---

### **COURSE OVERVIEW**

This course is designed to provide you with the knowledge, understanding and practical skills needed to work as a Gym Instructor in the sport and physical activity sector. This qualification can help prepare you for Level 3 Personal Training qualifications.

### **ENTRY REQUIREMENTS**

You will need a minimum of three GCSEs at grade 3 or above including English and maths, or a related Level 1 vocational qualification.

Mature applicants may be considered on relevant experience without having the required entry requirements. However, an interview will always be required.

### **PROGRESSION**

On completion, you can progress onto a Level 3 programme or enter employment in a range of roles including Gym Manager.

## SPORT

**BTEC | Level 3 | Two Years**

---

### **COURSE OVERVIEW**

This is a great qualification for students who wish to deepen their own understanding of how science underpins fitness. The course is the equivalent to 3 A Levels and is perfect if you wish to study at degree level afterward, or pursue careers in personal fitness training, coaching, nutrition and dietetics industries and sport related physiotherapy.

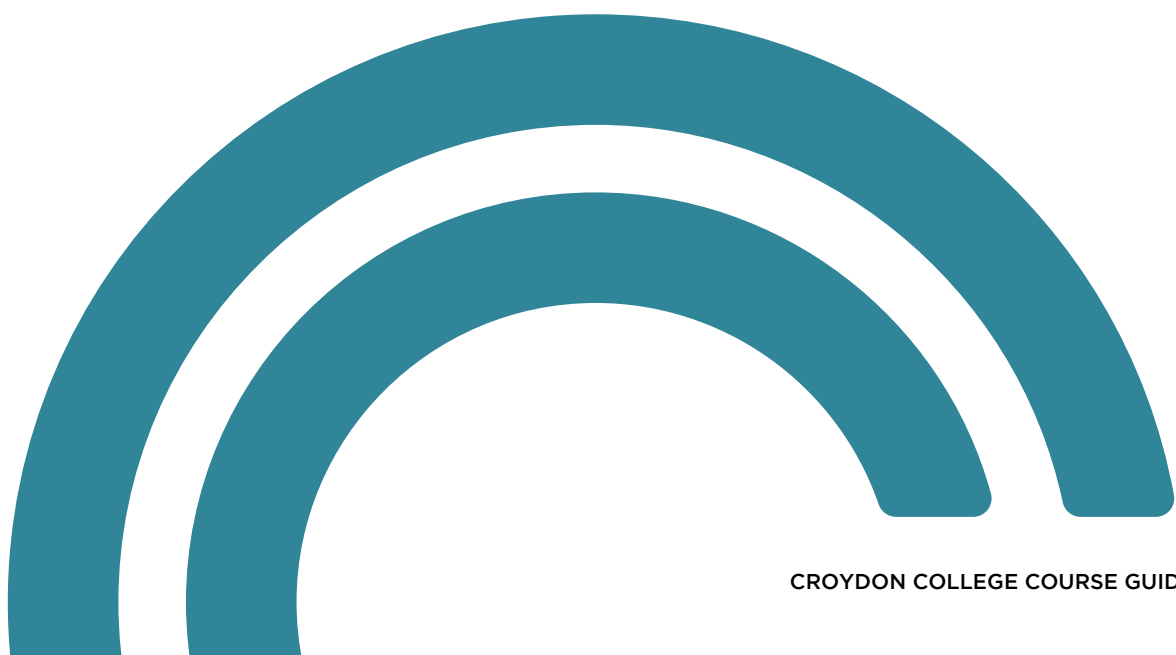
### **ENTRY REQUIREMENTS**

You will need a minimum of four GCSEs at grade 4 or above including English and maths, or a related Level 2 vocational qualification. You must also have a GCSE at grade 4 or above in PE/Science.

Mature applicants may be considered on relevant experience without having the required entry requirements. However, an interview will always be required.

### **PROGRESSION**

On completion, you can progress to higher education to study a range of options including Sport psychology, Sport science, Sport physiotherapy, Health and Nutrition.



# SUPPORTED EDUCATION



**We offer a range of programmes aimed at supporting students to achieve their full potential and for those who require additional learning support and who want to live and learn independently.**

With small class sizes and a focus on employability and independent living skills, we offer specifically designed courses for individuals who would benefit from learning within a supported environment.

## SUPPORTED EDUCATION

### Pre Entry to Level 1 | One Year Programmes

---

#### COURSE OVERVIEW

Our Supported Education programmes offer four stages for young people with disabilities, learning difficulties and/or health conditions to transition from school into their adult life.

These four stages are:

- **Explorer** – An exploration of college life at Croydon College and our immediate environment.
- **Life, Careers and Enterprise** – Access your community, investigate your potential career path, engage in work experience and participate in enterprise.
- **Entering a Vocation** – Enter employment and study in a programme built to suit you.
- **Supported Internship** – Work in a placement and move into employment.

The programmes are personalised to support young people to achieve the outcomes outlined in their Education, Health and Care Plans (EHCPs). They focus on the individual young person and what they can achieve to improve their outcomes and prepare themselves for further transition.

#### ENTRY REQUIREMENTS

After completing initial assessments and interviews learners are placed on to one of four progressive stages. The stages are linked to the learner's independence skills, communication and readiness to work.

#### PROGRESSION

Learners can enter at any stage based on the skills they have already acquired and will progress year on year towards paid work, a Level 1 programme of study or towards volunteering and a community provision.



# TRAVEL AND TOURISM



**Explore the world of travel. Learn about tourism, customer service, and planning trips. Your passion for travel could lead to jobs in hotels, travel agencies, and more.**

## **FACILITIES AND RESOURCES**

**Trips and visits**

---

**Work experience opportunities**

---

**Guest speakers working in the industry**

---

## **CAREER INSPIRATION**

Travel Agent

Tour Operator

Hotel Manager

Event Planner

Airline Staff



**CONSIDER THIS SUBJECT IF:** you're excited about exploring new places and cultures, the travel and tourism sector offers opportunities to share that passion.



The latest figures show that **3.3 million** people work in the tourism industry in the UK, and this is expected to grow to **3.8 million by 2025**

## TRAVEL AND TOURISM

**NCFE | Level 2 | One Year**

### COURSE OVERVIEW

On this course you will learn about the UK Travel and Tourism sector and Business Environments in order to prepare you for progression to higher level courses or work in the sector.

### ENTRY REQUIREMENTS

You will need a minimum of three GCSEs at grade 3 or above including English and maths, or a related Level 1 vocational qualification.

Mature applicants may be considered on relevant experience without having the required entry requirements. However, an interview will always be required.

### PROGRESSION

Successful completion will enable you to progress onto the next level of a selection of programmes like IT, Travel, Media, and Business and subsequently move on into University, or an apprenticeship.

## TRAVEL AND TOURISM

**NCFE | Level 3 | Two Years**

### COURSE OVERVIEW

Are you interested in marketing in travel and tourism? Ever wondered what happens in the business operations within the travel industry? Or, do you want to work for a major airline or travel company?

This course will prepare you for an exciting and growing industry where marketing, business operations and customer service skills are integral.

### ENTRY REQUIREMENTS

You will need a minimum of four GCSEs at grade 4 or above including English and maths, or a related Level 2 vocational qualification.

Mature applicants may be considered on relevant experience without having the required entry requirements. However, an interview will always be required.

### PROGRESSION

On completion you can progress into higher education to study topics including Events Management, Travel and Tourism, Hospitality and Tourism, International Tourism Management with Air Business with Tourism.

FOR FULL COURSE DETAILS, HEAD TO OUR WEBSITE **CROYDON.AC.UK**

# T LEVELS

T-LEVELS



**T Levels are a two-year qualification that you can do after GCSEs as an alternative to A Levels, other post-16 courses or an apprenticeship.**

They have been designed with leading businesses and employers to give you the knowledge and skills you need.

**80%**  
classroom

**80% classroom based  
at College**

**20%**  
work

**20% 45-day  
work placement**

Your industry placement gives you the chance to learn what a real career is like while you continue your studies.

Your T Level will be worth UCAS points and will be recognised by universities and other education providers so you can choose to continue studying if you wish.





Many employers **retain T Level students** on completion of their course and support progression within their business onto an **apprenticeship or into another role.**

## MECHANICAL ENGINEERING

**T Level | Level 3 | Two Years**

### COURSE OVERVIEW

On this course, you will develop an understanding of a broad range of issues relevant to the sector, including:

- Working within the Engineering and Manufacturing Sectors
- Essential maths for engineering and manufacturing
- Materials and their properties
- Commercial and financial awareness

### ENTRY REQUIREMENTS

You will need a minimum of four GCSEs at grade 4 or above including English and maths, or a related Level 2 vocational qualification.

Mature applicants may be considered on relevant experience without having the required entry requirements. However, an interview will always be required.

### PROGRESSION

Careers are wide and varied in the engineering sector, they may include the following: mechanical engineer, aerospace engineer, electrical engineer, engineering operative, lift engineer, manufacturing systems engineer, mechanical engineer or lighting engineer and many more.



**The environment feels safe and is a great place to learn.**

FOR FULL COURSE DETAILS, HEAD TO OUR WEBSITE **CROYDON.AC.UK**

# DIGITAL PRODUCTION DESIGN AND DEVELOPMENT

T Level | Level 3 | Two Years

---

## COURSE OVERVIEW

This two-year course will teach you the core knowledge and skills needed to enter into a range of careers in the digital industry.

Topics covered include:

- Digital technologies
- Data in software design
- Digital technologies to analyse and solve problems
- Digital environments, including physical, virtual and cloud environments
- Emerging technical trends, such as Internet of Things (IoT), Artificial Intelligence (AI), Augmented Reality (AR), Blockchain, 3D printing
- Internet security
- Testing software, hardware and data

## ENTRY REQUIREMENTS

You will need a minimum of five GCSEs at grade 4 or above including English and maths, or a related Level 2 vocational qualification.

## PROGRESSION

This qualification is equivalent to three A Levels or L3 BTEC Ext Diploma and gives you a number of other benefits, including: a study programmes, which has been co-designed with employers to give you the skills industry needs on-the-job experience putting you in the best place possible to progress into work.

Job Opportunities include: Software Development Technician, Web Developer, Application Developer, Mobile Apps Developer, Games Developer, Application Support Analyst, Programmer, Automated Test Developer, E-Learning Developer.

# EDUCATION AND CHILDCARE (EARLY YEARS)

T Level | Level 3 | Two Years

---

## COURSE OVERVIEW

During the course, students will learn how to work with children from birth to five years old, and gain knowledge of children up to seven years. You will achieve this by attending College three days per week and a school nursery/reception class or private day nursery two days per week. Our placement officer will help support you in finding your work placement.

On successful completion of the course students will gain a license to practice, enabling you to work in early years setting or progress to a range of university courses.

## ENTRY REQUIREMENTS

You will need a minimum of four GCSEs at grade 4 or above including English and maths, or a related Level 2 vocational qualification. DBS check to be done at enrolment.

## PROGRESSION

On completion you can progress onto higher education courses, such as Nursing, Teaching or Social Work, or Higher Apprenticeships.

Career opportunities include: Early years educator. Primary/secondary/tertiary teaching and support assistant, Student engagement officer.

FOR FULL COURSE DETAILS, HEAD TO OUR WEBSITE [CROYDON.AC.UK](https://www.croydon.ac.uk)



# ACCESS COURSES



**Our Access courses attract students from a wide range of ages and backgrounds and are taught in an engaging and holistic way in order to give our students all of the knowledge and skills they need to make a career transition, or successfully progress to university and the workplace. These courses are for those aged 19 or above.**

Access to HE Diplomas are well established, national qualifications which allow students, without traditional Level 3 qualifications, to apply for degree courses and enter university.

## ACCESS – PRE-ACCESS LEVEL 1

Entry 3 and Level 1

---

### COURSE OVERVIEW

This qualification is designed for adults who are interested in progressing to a Level 2 Access Programme at Croydon College. You'll cover a range of topics including Digital Skills, English, maths, Science, Health and Social Care.

### ENTRY REQUIREMENTS

You will be required to take an English and maths written assessment, regardless of previous qualifications. All applicants will be interviewed to ensure that the course is the right choice based on previous educational and work experience.

### PROGRESSION

Internal progression to Access to Nursing Level 2, Access to Science Level 2 or Access to Social Science Level 2 within Croydon College.

## COUNSELLING

Level 2 | Four Months

---

### COURSE OVERVIEW

This qualification will introduce you to the use of counselling skills in everyday life and work, and some of the approaches that underpin the use of these skills. It will give you the opportunity to investigate the knowledge and skills needed to use counselling skills and engage in a helping interaction appropriately.

This qualification does not qualify learners to practise as a counsellor.

## IT DIGITAL SKILLS

Entry 3 and Level 1 | Four Months

---

### COURSE OVERVIEW

This qualification will allow you to develop the digital skills you need for life, work, or further study. This course is designed for adults who are interested in developing their IT skills to undertake jobs and to engaged in further study.

### ENTRY REQUIREMENTS

No previous formal qualifications are required for entry to these qualifications. However, if you are applying to study English and/or maths there will be an initial assessment during enrolment and a baseline assessment test during induction.

### PROGRESSION

On completion, you can progress onto further education study or enter employment.

### ENTRY REQUIREMENTS

You will be required to take an English and maths written assessment, regardless of previous qualifications. All applicants will be interviewed to ensure that the course is the right choice based on previous educational and work experience.

### PROGRESSION

On completion you may progress onto the Counselling Level 3 course. Successfully achieving the Level 2 and 3 Counselling courses will provide you with an opportunity to progress to Counselling Level 4 at Croydon University Centre.

FOR FULL COURSE DETAILS, HEAD  
TO OUR WEBSITE [CROYDON.AC.UK](https://www.croydon.ac.uk)

## ACCESS TO CRIMINOLOGY AND LAW

Level 2 | Four Months

---

### COURSE OVERVIEW

You will study a range of topics including Introduction to Criminal Law, Understanding Young People Law and Order, Essay Writing, Referencing Skills Technology, Oral Communication Skills and Spreadsheets. You will also build your skills in preparing for university, UCAS and personal statement research, referencing and independent study.

### ENTRY REQUIREMENTS

You will need a minimum of English and maths at grade 3 or equivalent. Evidence of a commitment to learn and the ability to study at this level shown at interview.

Equivalent overseas academic qualifications will be accepted on this course.

### PROGRESSION

On completion of your course, you can enter employment, or you can progress on to an Access to HE Level 3 Diploma.

## ACCESS TO NURSING

Level 2 | One Year

---

### COURSE OVERVIEW

This qualification is designed for adults who are interested in nursing or social work as a professional career, and is well established and a progression pathway to Access to HE Diploma at Level 3. You will study a range of topics including Digital Skills, English, maths, Biology, Psychology, Nursing Studies and Infection Control.

### ENTRY REQUIREMENTS

You will need a minimum of English and maths at grade 3 or equivalent. Evidence of a commitment to learn and the ability to study at this level shown at interview.

Equivalent overseas academic qualifications will be accepted on this course.

### PROGRESSION

Internal progression to Access Level 3 – Nursing, Nursing in Work or Nursing and Health Science upon successful completion of all Level 2 units at Croydon College, progressing towards their career goals in friendly and familiar surroundings.



## ACCESS TO HIGHER EDUCATION DIPLOMA – NURSING AND HEALTH SCIENCE

**Level 3 | One Year**

---

### COURSE OVERVIEW

If you want to study Nursing at university then the Access to HE Diploma in Health and Human Sciences may also be suitable. At Croydon College we offer a nursing or midwifery pathway with this Diploma, where you will take the units required to meet the entry requirements for a nursing degree.

### ENTRY REQUIREMENTS

You will need a minimum of English at GCSE grade 4 or equivalent. At least a Level 1 numeracy qualification with the opportunity to study Level 2 maths at college. Evidence of a commitment to learn and the ability to study at this level shown at interview.

Equivalent overseas academic qualifications will be accepted on this course.

Learners primarily progress to Higher Education study in areas related to Health and Human Sciences. These may include: Nursing, Radiography, Physiotherapy, Occupational Therapy, Dietetics and Nutrition, Biomedical Sciences, Midwifery, Sports Science, Speech and Language Therapy and Psychology

In addition, internal progression to: Foundation Degree in Public Health and Social Care or BSc in Adult Nursing (delivered by University of Roehampton) at Croydon University Centre.

## ACCESS TO HIGHER EDUCATION DIPLOMA – NURSING FOR HEALTHCARE WORKERS

**Level 3 | One Year**

---

### COURSE OVERVIEW

This course is suitable if you are currently working as Health Care Assistants, Care Workers, Bank Staff or Support Staff. This qualification requires a maturity of approach and a high level of commitment. This is a qualification designed for adults with an interest in Adult Nursing, Child Nursing, Mental Health Nursing, Learning Disability Nursing or adults seeking a change of direction because of unemployment or lack of career opportunities.

### ENTRY REQUIREMENTS

You will need a minimum of English at GCSE grade 4 or equivalent. At least a Level 1 numeracy qualification with the opportunity to study Level 2 maths at college. Evidence of a commitment to learn and the ability to study at this level shown at interview.

Equivalent overseas academic qualifications will be accepted on this course.

### PROGRESSION

Learners primarily progress to Higher Education study in areas related to Midwifery, Adult, Nursing, Child Nursing, Related Health Studies degrees.

In addition, internal progression to: Foundation Degree in Public Health and Social Care or BSc in Adult Nursing (delivered by University of Roehampton) at Croydon University Centre.

**FOR FULL COURSE DETAILS, HEAD  
TO OUR WEBSITE [CROYDON.AC.UK](https://www.croydon.ac.uk)**

## ACCESS TO HIGHER EDUCATION DIPLOMA – MIDWIFERY

Level 3 | One Year

---

### COURSE OVERVIEW

This course is suitable for those who have been out of full-time education for some time and aiming to join university or higher education courses in a Midwifery related subject. This qualification requires a maturity of approach and a high level of commitment. In addition, applicants need a successful interview and screening and must have sufficient time to devote to their studies.

### ENTRY REQUIREMENTS

You will need a minimum of English and maths at grade 4 or equivalent. Evidence of a commitment to learn and the ability to study at this level shown at interview.

Equivalent overseas academic qualifications will be accepted on this course.

### PROGRESSION

Learners primarily progress to Higher Education study in areas including Midwifery, Adult Nursing, Child Nursing, Related Health Studies degrees.

In addition, internal progression to: Foundation Degree in Public Health and Social Care or BSc in Adult Nursing (delivered by University of Roehampton) at Croydon University Centre.

## ACCESS TO HIGHER EDUCATION DIPLOMA – SOCIAL WORK

Level 3 | One Year

---

### COURSE OVERVIEW

This course is designed to provide the knowledge and skills needed to progress to a degree or diploma course in higher education within a Social Work related subject. This programme is ideal for those adults with a current or previous role or interest in Social Work, Youth and Community Work, Social Policy, Psychology and Sociology. Or, those seeking a change of direction because of unemployment or lack of career opportunities in their previous field and who have a demonstrable interest in entering a Social Work related profession.

### ENTRY REQUIREMENTS

You will need a minimum of English and maths at grade 4 or equivalent. Evidence of a commitment to learn and the ability to study at this level shown at interview.

Equivalent overseas academic qualifications will be accepted on this course.

### PROGRESSION

Learners primarily progress to Higher Education study in areas related to Social Work which include Social Policy, Psychology, Sociology, Criminology.

FOR FULL COURSE DETAILS, HEAD  
TO OUR WEBSITE [CROYDON.AC.UK](https://www.croydon.ac.uk)



## ACCESS TO HIGHER EDUCATION DIPLOMA – SCIENCE

Level 3 | One Year

---

### COURSE OVERVIEW

On this course will gain scientific knowledge of a wide range of areas including: the main body system; cell division and genetics; the nervous system; disease and immunity. You will also look at human behaviour and let you experience and explore various theories and methods.

### ENTRY REQUIREMENTS

You will need a minimum of English and maths at grade 4 or equivalent. Evidence of a commitment to learn and the ability to study at this level shown at interview.

Equivalent overseas academic qualifications will be accepted on this course.

### PROGRESSION

Learners primarily progress to Higher Education study in areas related to Science. These may include some of the following areas of Degree level study: Biology, Chemistry, Pharmacy, Radiography, Biomedical Sciences, Ecology, Nutrition.

## ACCESS TO HIGHER EDUCATION DIPLOMA – NURSING

Level 3 | One Year

---

### COURSE OVERVIEW

On this programme you will learn all about the human body, like the way people reproduce to organ functionality and the way human cells grow and divide. You will also study the history of the NHS, so you understand its founding principles and the way it has been shaped over time. Importantly you will learning the roles and responsibilities of being a nurse.

### ENTRY REQUIREMENTS

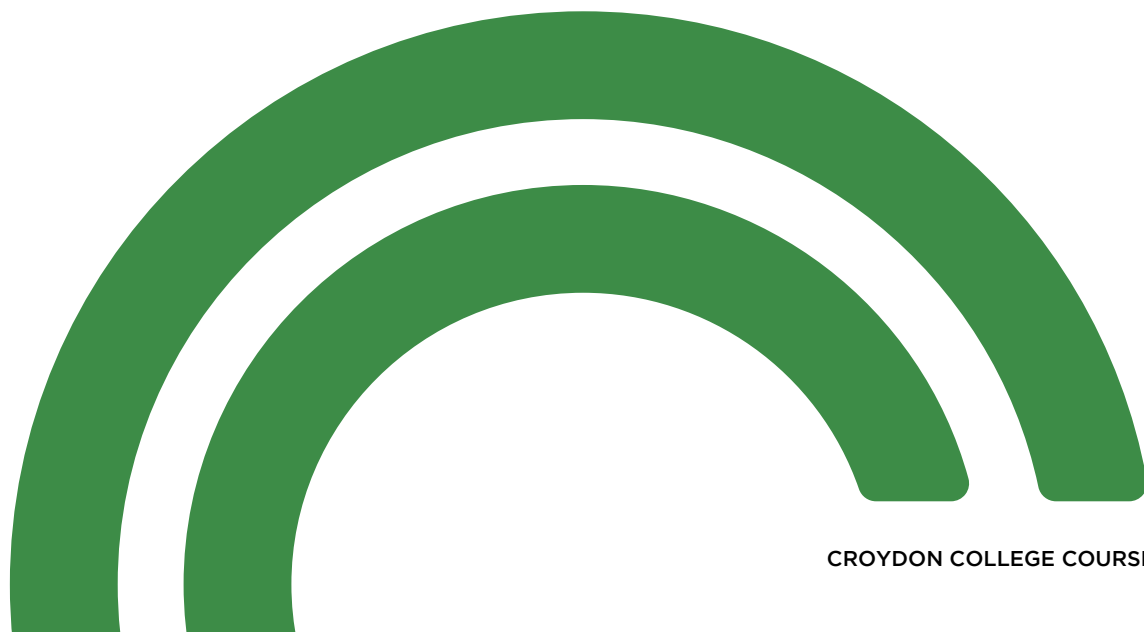
You will need a minimum of English and maths at grade 4 or equivalent. Evidence of a commitment to learn and the ability to study at this level shown at interview.

Equivalent overseas academic qualifications will be accepted on this course.

### PROGRESSION

Learners primarily progress to Higher Education study in areas related to Nursing. These may include Adult Nursing, Child Nursing, Mental Health Nursing, Learning Disability Nursing, Midwifery, Related Health Studies degrees.

In addition, internal progression to: Foundation Degree in Public Health and Social Care or BSc in Adult Nursing (delivered by Roehampton University) at Croydon University Centre.



## ACCESS TO HIGHER EDUCATION DIPLOMA - MENTAL HEALTH NURSING

Level 3 | One Year

---

### COURSE OVERVIEW

This course is for anyone with an interest in mental health nursing. You will study modules covering human physiology, mental health studies and professional healthcare practice.

### ENTRY REQUIREMENTS

You will need a minimum of English and maths at grade 4 or equivalent. Evidence of a commitment to learn and the ability to study at this level shown at interview.

Equivalent overseas academic qualifications will be accepted on this course.

### PROGRESSION

This course will give you the opportunity to progress onto degrees in mental health nursing, nursing, mental health and wellbeing.

## ACCESS TO HIGHER EDUCATION DIPLOMA - COMMUNITY SERVICES

Level 3 | One Year

---

### COURSE OVERVIEW

This course is for anyone with a keen interest in Law, Sociology or Psychology. On completion, it allows students, without traditional Level 3 qualifications, to apply for degree courses and enter university.

### ENTRY REQUIREMENTS

You will need a minimum of English at grade 4 and maths at grade 3, or equivalent. Evidence of a commitment to learn and the ability to study at this level shown at interview.

Equivalent overseas academic qualifications will be accepted on this course.

### PROGRESSION

Students primarily progress to Higher Education study in areas such as: mental health, nursing, sociology and psychology.

## **ACCESS TO HIGHER EDUCATION – CRIMINOLOGY AND POLICING**

**Level 3 | One Year**

---

### **COURSE OVERVIEW**

This course will provide you with a broad understanding of crime and the criminal justice system, whilst also covering topics such as psychology, forensics, sociology and victimology.

### **ENTRY REQUIREMENTS**

You will need a minimum of English and maths at grade 4 or equivalent. Evidence of a commitment to learn and the ability to study at this level shown at interview.

Equivalent overseas academic qualifications will be accepted on this course.

### **PROGRESSION**

The qualification gives you the relevant academic subject knowledge needed for higher education study. It is well established and widely accepted by universities, qualifying for UCAS points that are comparable to the tariff points for three A levels.

## **COUNSELLING (NCFE)**

**Level 2/3 | One Year**

---

### **COURSE OVERVIEW**

This qualification will provide you with in-depth knowledge of the use of counselling skills in everyday life and work and the approaches that underpin the use of these skills. You will cover topics such as Developing Counselling Skills, Working ethically and Theoretical approaches in the use of counselling skills.

### **ENTRY REQUIREMENTS**

You will need a minimum of English and maths at grade 4 or equivalent. Evidence of a commitment to learn and the ability to study at this level shown at interview.

Equivalent overseas academic qualifications will be accepted on this course.

### **PROGRESSION**

On completion you can progress onto Level 4 counselling qualifications.

**FOR FULL COURSE DETAILS, HEAD  
TO OUR WEBSITE [CROYDON.AC.UK](https://www.croydon.ac.uk)**

# ENGLISH AND MATHS



## FACTS

Employers want to recruit employees with **at least grade 4 in English and maths.**

---

You can earn approximately **£2,000 more** if you have grade at least grade 4 in **English/maths** than those who don't.

---

**Universities require** students to have at least grade 4 in English and maths.

---

**You need maths and English in everyday life** so you get better understanding of taxes, loans, bills and have better understandings of the whole world.

---

Research shows that having good grades in English/maths has a **positive impact on wellbeing and mental health.**

---

## MATHS

### GCSE

---

#### COURSE OVERVIEW

This course is for 16-18-year-old students who do not have grade 4+ in maths.

On this course, you will study topics such as:

- Number
- Algebra
- Ratio
- Proportion and Rates of Change
- Data Handling
- Geometry and Measure
- Trigonometry
- Statistics and Probability
- Graphs, Charts and Averages

You will study this alongside your main qualification.

#### ENTRY REQUIREMENTS

If you are aged 16-18 and do not already have GCSE maths at grade 4 or above, it will be included in your study programme. This is compulsory for all under 19 students if they do not have grade 4+ in this subject.

#### PROGRESSION

Employers value people with mathematical skills. A grade 4 in GCSE is an important qualification for almost all careers and courses.

## MATHS

### Level 3 Certificate | One Year

---

#### COURSE OVERVIEW

Core Maths is intended for students who have passed GCSE maths at grade 4 or above, but who have not chosen to study AS or A level maths. You may study this course alongside other qualifications, including vocational courses.

#### ENTRY REQUIREMENTS

GCSE Maths grade 4 and above.

#### PROGRESSION

Core Maths is useful preparation for a degree course/employment.



FOR FULL COURSE DETAILS, HEAD  
TO OUR WEBSITE [CROYDON.AC.UK](https://www.croydon.ac.uk)

## ENGLISH

GCSE | One Year

### COURSE OVERVIEW

This course is for 16–18-year-old students who do not have grade 4+ in English.

This course covers Reading, Writing, Speaking and Listening. You will:

- Identify explicit and implicit information
- Explain, comment on and analyse a writer's use of language and structure
- Evaluate a text critically
- Compare writers' viewpoints and perspectives
- Produce descriptive and narrative writing
- Complete viewpoint writing
- Develop good spelling, punctuation and grammar.

You will study this alongside your main qualification.

### ENTRY REQUIREMENTS

If you are aged 16–18 and do not already have GCSE maths at grade 4 or above, it will be included in your study programme. This is compulsory for all under 19 students if they do not have grade 4+ in this subject.

## FUNCTIONAL SKILLS – ENGLISH (19+)

Entry Level 1 – Level 2 | One Year | Fast track option available

### COURSE OVERVIEW

This course is designed to help you improve your practical English skills. You will be able to apply the skills learnt in everyday life, both at home and in the workplace. We offer day and evening courses so you can fit your studies around your other commitments.

### ENTRY REQUIREMENTS

No entry requirements – you will be invited in for an assessment and you will be placed on a course that is right for you. We will recommend the course length once you have completed the initial assessment.

### PROGRESSION

Learners possessing these skills are able to progress in further and higher education, training and employment and make a positive contribution to the communities in which they live and work.



## FUNCTIONAL SKILLS – MATHS (19+)

**Entry Level 1 – Level 2 | One Year | Fast track option available**

---

### COURSE OVERVIEW

This course is designed to help you improve your practical Maths skills. You will be able to apply the skills learnt in everyday life, both at home and in the workplace.

### ENTRY REQUIREMENTS

No entry requirements – you will be invited in for an assessment and you will be placed on a course that is right for you. We will recommend the course length once you have completed the initial assessment.

### PROGRESSION

Learners possessing these skills are able to progress in further and higher education, training and employment and make a positive contribution to the communities in which they live and work.

## GCSE MATHS (19+)

**Level 2 | One Year | Fast track option available**

---

### COURSE OVERVIEW

This course will provide you with the opportunity to improve your maths skills and gain a nationally recognised qualification in maths. We have both day and evening courses.

### ENTRY REQUIREMENTS

No prior qualification is required.

Applicants must complete an initial assessment – the enrolment is based on the result of assessment.

## GCSE ENGLISH (19+)

**Level 2 | One Year**

---

### COURSE OVERVIEW

This course provides you with the opportunity to improve your English skills and gain a nationally recognised qualification in English. This qualification will help you progress in education, training and employment. We have both day and evening courses.

### ENTRY REQUIREMENTS

No prior qualification is required.

Applicants must complete an initial assessment – the enrolment is based on the result of assessment.

### PROGRESSION

GCSE qualification is sought after by employers, industry and higher education. GCSE English qualification is required by universities and higher education institutions as evidence of your competence in English. Employers also recognise the value of competence in English and are increasingly requiring that applicants have GCSE in English.

### PROGRESSION

GCSE maths qualification will help you progress in education, training and employment and make a positive contribution to your community.

**FOR 19+ ENGLISH AND  
MATHS COURSES ARE FREE**

# ONLINE LEARNING

**Are you looking for a flexible approach to learning? Then our free online courses are perfect for you. They allow you to choose where you study without having to attend lessons in a classroom. You could study at home, in the workplace or even on the go.**

Our free online courses lead to a nationally recognised qualification and are available throughout the year, enabling you to choose when you would like to start. Our expert tutors will support you remotely, providing you with feedback to help you develop your knowledge and achieve your qualification.

These courses are perfect if you wish to learn new skills, develop in your professional role or if you simply enjoy learning!

## **WE OFFER COURSES IN:**

**Business, Leadership and Management**

---

**Childcare and Education**

---

**Health and Social Care**

---

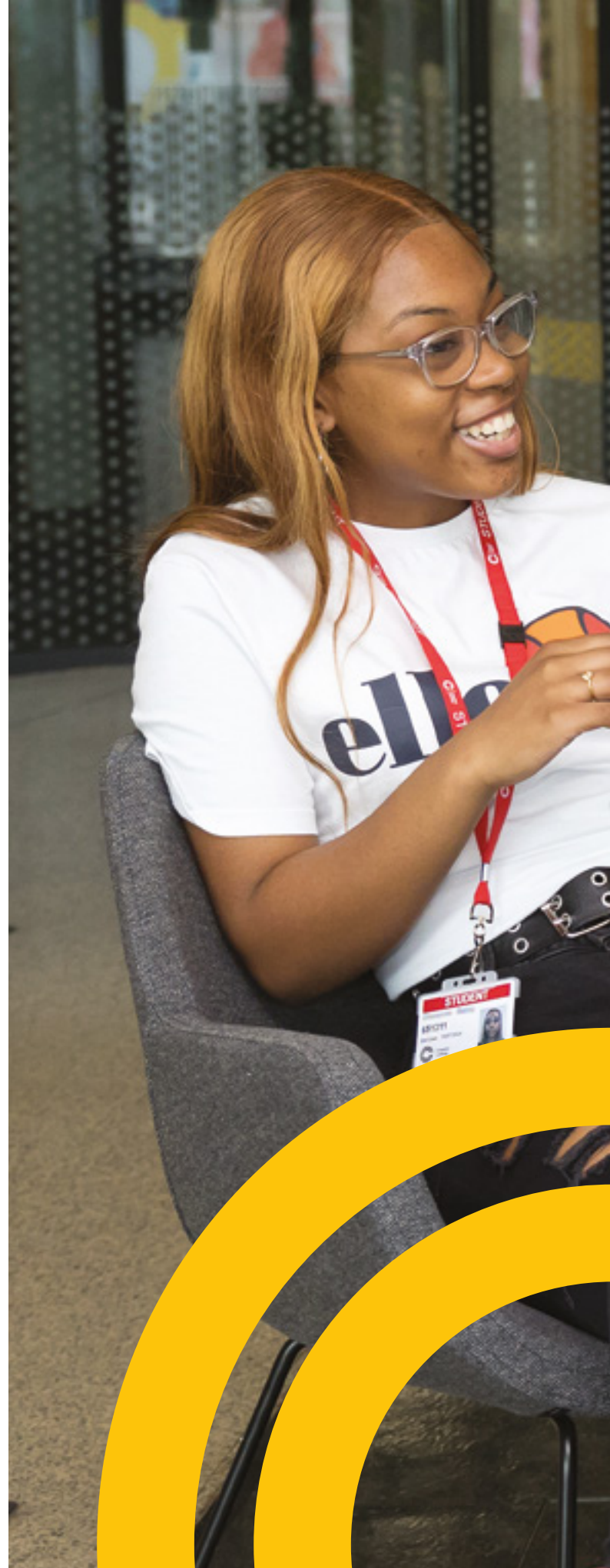
**IT and Digital**

---

**Retail and Hospitality**

---

**FIND OUT MORE**  
**[CROYDON.AC.UK/ONLINE-COURSES](https://CROYDON.AC.UK/ONLINE-COURSES)**





# WORLD OF WORK

**We have a dedicated team to support individuals from all communities and all ages through a range of inclusive programmes.**

We can help you to increase your work-based and employability skills, enabling you to take your first steps into employment.

**The World of Work Team based at our Croydon College campus, works closely with over 1,000 employers, connecting students with work-based opportunities to learn more skills via a range of options from apprenticeships to T Levels alongside a wide range of online learning courses, work experience opportunities and industry placements.**

WORK EXPERIENCE





# INSPIRING SUCCESS

Coulston Sixth Form College provides the young people of Coulsdon and the surrounding area with an exceptional sixth-form experience. Small enough to know each individual student, yet big enough to provide wide subject choice and access to amazing facilities and teachers who bring their industry experience to the classrooms, studios and workshops.

The choice of subjects at the College is extensive with 30 A Levels to choose from and a wide range of BTEC subjects.

## **WE OFFER COURSES IN:**

- Business and Accounting
- Computing and Creative Tech
- English and MFL
- Humanities and Law
- Health and Social Care
- Maths
- Creative Digital Media and Film
- Performing Arts and Music
- Psychology
- Science and Engineering
- Sport and Public Services
- Travel and Hospitality
- Visual Arts
- T Levels

LEARN MORE AT [COULSDON.AC.UK](https://www.coulston.ac.uk)



# WHERE CAREERS ARE MADE

Croydon University Centre, located right in the heart of Croydon, are passionate about offering high quality, affordable university degrees and higher national programmes directly to community. Courses are designed with local stakeholders in industries with high demand.

Tuition is offered in small groups in a supportive and inclusive environment, making the Centre a truly unique place to study, with contact time built flexibly around existing work, childcare or other commitments.

## **COURSES AVAILABLE:**

- BA (Hons) Business & Management
- BA (Hons) Public Health & Social Care
- BA (Hons) Adult Nursing
- BA (Hons) Children's Nursing
- HNC/D Animation
- HNC/D Games Development
- HNC Building Services Engineer
- HNC Construction Site Supervisor
- HNC/D Quantity Surveying
- Level 4 HE (Certificate) - Public Health & Social Care
- Level 4 HNC in Construction & Built Environment
- Level 4 HNC in Cyber Security

# FINANCIAL SUPPORT



**Money shouldn't be a barrier to learning, so we have funds allocated by the Government to help those who need it. Applications are 'means tested' dependent on your household income and subject to eligibility.**

16–18 Bursaries can support with travel and course related costs.

---

19+ Discretionary Learner Support Fund and Advanced Learner Loan bursaries can support with travel, course related costs and childcare.

---

The 16–19 FE Free College Meals Scheme.

---

## **IN CARE OR CARE LEAVER?**

We offer a tailored package to make sure you receive both the financial and personal support you may need when studying at college.

**For more information and to see what support you may be eligible for go to [croydon.ac.uk/financial](https://croydon.ac.uk/financial) support or email [bursary@croydon.ac.uk](mailto:bursary@croydon.ac.uk)**

# FIND US

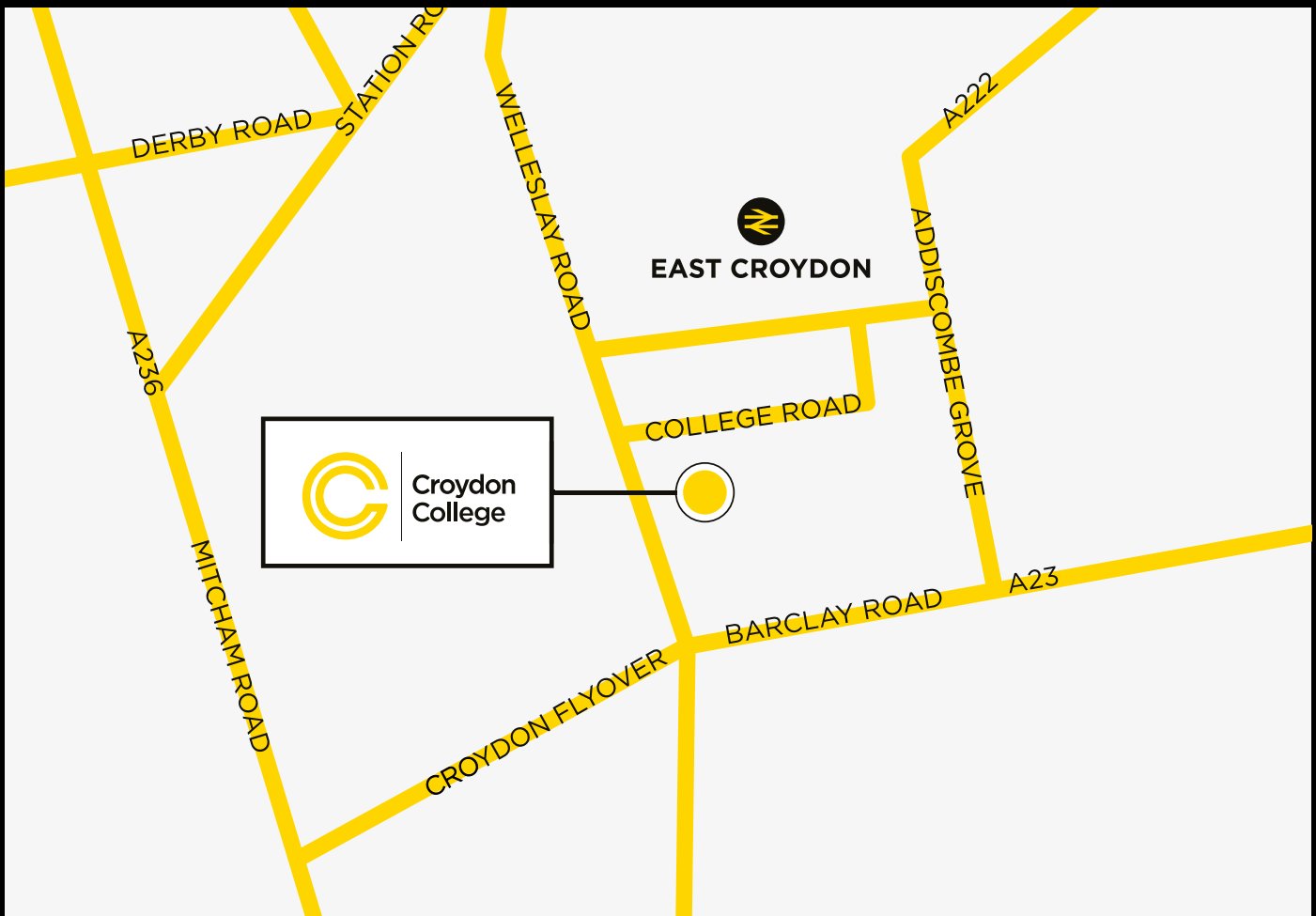
**The College which is in the heart of Croydon and is well-served by public transport.**

## BY PUBLIC TRANSPORT

Croydon is easily accessible via bus, train or tram, and East Croydon station is a short two-minute walk from the college. Please visit [www.tfl.gov.uk](http://www.tfl.gov.uk) for detailed information.

## BY CAR

Croydon College is based in Croydon town centre, next to the famous Fairfield Halls. Car parking is available for both short and long-term stays.



The courses described in our prospectus are those expected to be on offer during the 2024–2025 academic year. Every effort has been made to ensure the accuracy of the information contained in this prospectus. Croydon College reserves the right, however, to introduce changes including the addition, withdrawal or restructuring of courses. It is important to note that places on courses are subject to availability, and that the courses themselves may be subject to a viable number of students enrolling. The contents of this guide therefore does not form a contractual obligation on Croydon College to provide any courses described in it.

# OPEN EVENTS 2023/2024

---

**Saturday 4 November 2023**, 10am–2pm

**Wednesday 13 March 2024**, 5pm–7pm

**Wednesday 19 June 2024**, 5pm–7pm



REGISTER  
[CROYDON.AC.UK/EVENTS](https://croydon.ac.uk/events)

## CROYDON COLLEGE

College Road  
Croydon  
CR9 1DX

---

## CONTACT US

020 8686 5700  
[info@croydon.ac.uk](mailto:info@croydon.ac.uk)  
[croydon.ac.uk](https://croydon.ac.uk)



Designed by: [oysterdesign.co.uk](https://oysterdesign.co.uk)

